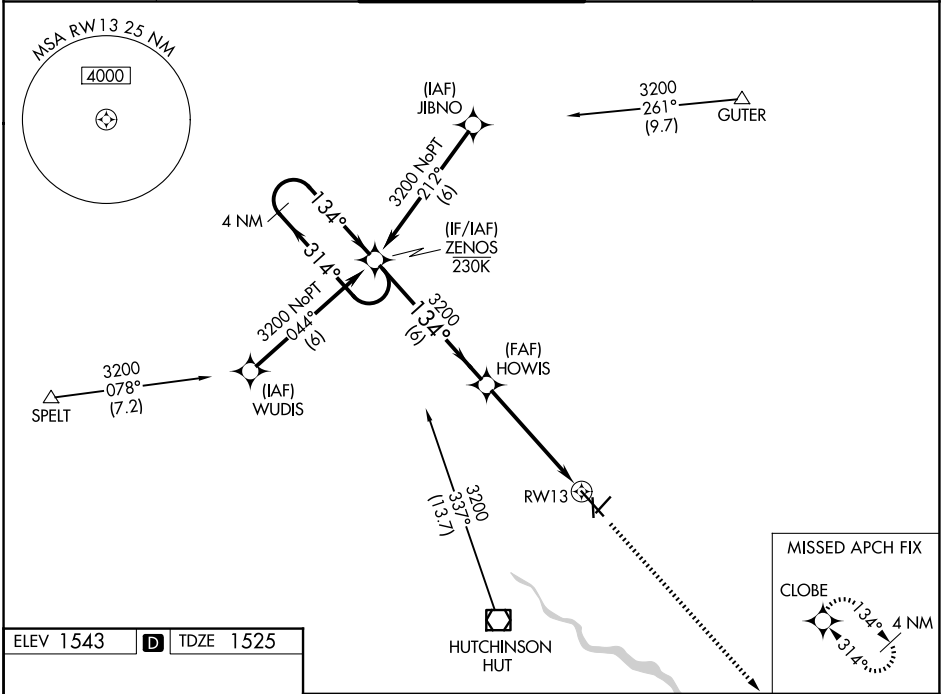


WAAS CH <b>50210</b> <b>W13A</b>	APP CRS <b>134°</b>	Rwy Ldg TDZE Apt Elev	<b>7003</b> <b>1525</b> <b>1543</b>
--	------------------------	-----------------------------	---

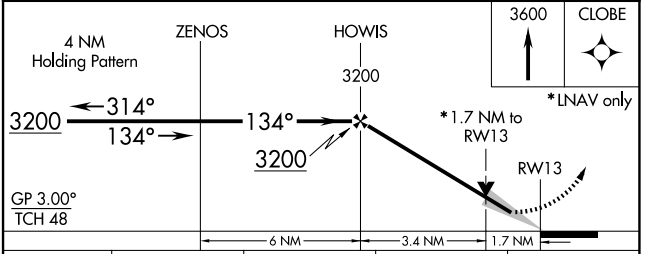
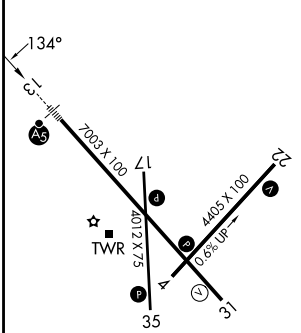
# RNAV (GPS) RWY 13

HUTCHINSON RGNL (HUT)

RNP APCH-GPS		MALSR		MISSED APPROACH: Climb to 3600 direct CLOBE and hold.	
<p>Circling to Rwy 22 NA at night. For uncompensated Baro-VNAV systems, LNAV/VNAV NA below -18°C or above 54°C. # RVR 1800 authorized with use of FD or HUD to DA.</p>					
ATIS <b>124.25</b>	WICHITA APP CON <b>125.5 306.2</b>	HUTCHINSON TOWER * <b>118.5 (CTAF) 363.0</b>	GND CON <b>121.9</b>	UNICOM <b>122.95</b>	



ELEV 1543	<b>D</b>	TDZE 1525
-----------	----------	-----------



CATEGORY	A	B	C	D
LPV DA#	1725/24 200 (200-½)			
LNAV/VNAV DA	1932/40 407 (400-¾)			
LNAV MDA	2120/24 595 (600-½)		2120-1¼ 595 (600-1¼)	
CIRCLING	2120-1 577 (600-1)		2200-1¾ 2720-3 657 (700-1¾) 1177 (1200-3)	

REIL Rwy 4, 22 and 31  
HIRL Rwy 13-31  
MIRL Rwy 4-22 and 17-35

NC-2, 14 MAY 2026 to 11 JUN 2026

NC-2, 14 MAY 2026 to 11 JUN 2026