

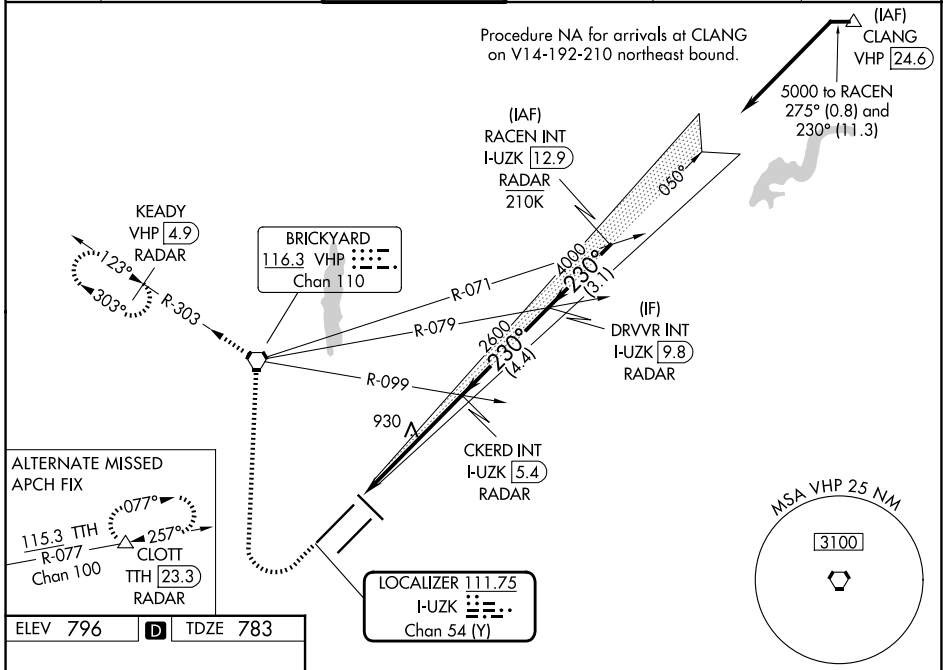
LOC/DME I-UZK <b>111.75</b> Chan 54 (Y)	APP CRS <b>230°</b>	Rwy Ldg <b>11200</b> TDZE <b>783</b> Apt Elev <b>796</b>
---	------------------------	--

# ILS RWY 23R (SA CAT I & II)

INDIANAPOLIS INTL (IND)

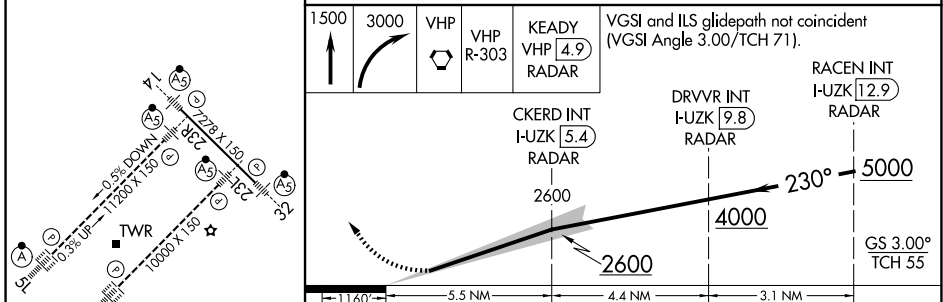
Simultaneous approach authorized. DME or RADAR required. Requires specific OPSPEC, MSPEC, or LOA approval and use of HUD to DH. Reduced lighting: requires specific OPSPEC, MSPEC, or LOA approval and use of autoland or HUD to touchdown.	MALS R	MISSED APPROACH: Climb to 1500 then climbing right turn to 3000 direct VHP VORTAC and on VHP R-303 to KEADY/VHP 4.9 DME/RADAR and hold.

D-ATIS <b>134.25</b>	INDIANAPOLIS APP CON <b>128.175 317.8</b>	INDY TOWER <b>120.9 251.1</b>	GND CON <b>121.9</b>	CLNC DEL <b>128.75 251.1</b>	CPDLC
-------------------------	--	----------------------------------	-------------------------	---------------------------------	-------



EC-2, 14 MAY 2026 to 11 JUN 2026

EC-2, 14 MAY 2026 to 11 JUN 2026



CATEGORY	A	B	C	D
S-ILS 23R	SA CAT I RA 140/14 150 DA 933			
S-ILS 23R	SA CAT II RA 96/12 100 DA 883			

**SA CATEGORY I & II ILS - SPECIAL AIRCREW & AIRCRAFT CERTIFICATION REQUIRED**

HIRL all Rwys  
TDZ/CL Rwys 5L and 5R  
INDIANAPOLIS, INDIANA  
Amdt 6 29MAR18

INDIANAPOLIS INTL (IND)

39°43'N-86°18'W

# ILS RWY 23R (SA CAT I & II)