

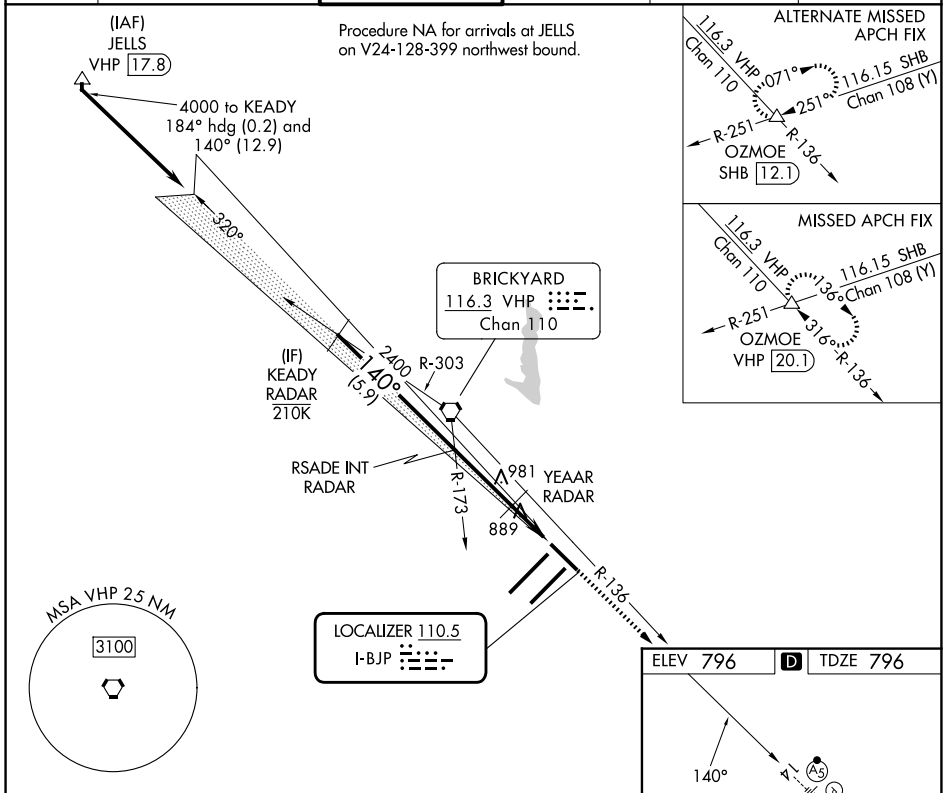
LOC I-BJP 110.5	APP CRS 140°	Rwy Ldg 7278 TDZE 796 Apt Elev 796
---------------------------	------------------------	---

ILS or LOC RWY 14

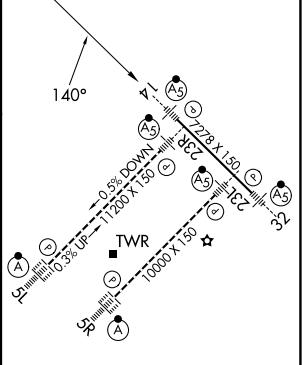
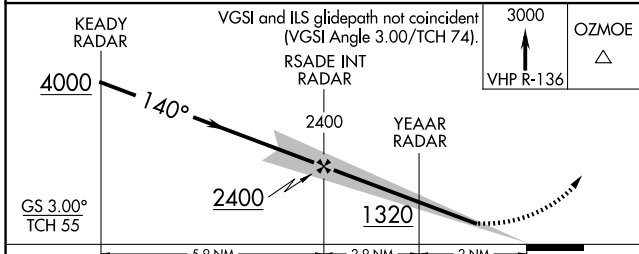
INDIANAPOLIS INTL (IND)

RADAR required.		MALSR	MISSED APPROACH: Climb to 3000 on VHP R-136 to OZMOE INT/VHP 20.1 DME and hold.
⚠ For inop ALS, increase S-LOC 14 Cat C and D visibility to RVR 5500. ⚠ *RVR 1800 authorized with use of FD or AP or HUD to DA.			

D-ATIS 134.25	INDIANAPOLIS APP CON 128.175 317.8	INDY TOWER 120.9 251.1	GND CON 121.9	CLNC DEL 128.75 251.1	CPDLC
-------------------------	--	----------------------------------	-------------------------	---------------------------------	-------



ELEV 796	D TDZE 796
----------	-------------------



CATEGORY	A	B	C	D
S-ILS 14 *	996/24 200 (200-½)			
S-LOC 14	1140/24	344 (400-½)	1140/30	344 (400-¾)
CIRCLING	1420-1 624 (700-1)		1420-1¾ 624 (700-1¾)	1560-2½ 764 (800-2½)

HIRL all Rwy's	TDZ/CL Rwy's 5L and 5R				
FAF to MAP 4.9 NM					
Knots	60	90	120	150	180
Min:Sec	4:54	3:16	2:27	1:58	1:38

EC-2, 14 MAY 2026 to 11 JUN 2026

EC-2, 14 MAY 2026 to 11 JUN 2026