

MAREO ONE DEPARTURE (RNAV)

INDIANAPOLIS, INDIANA

EC-2, 14 MAY 2026 to 11 JUN 2026

TOP ALTITUDE:
(JETS) 5000
(PROPS) 3000

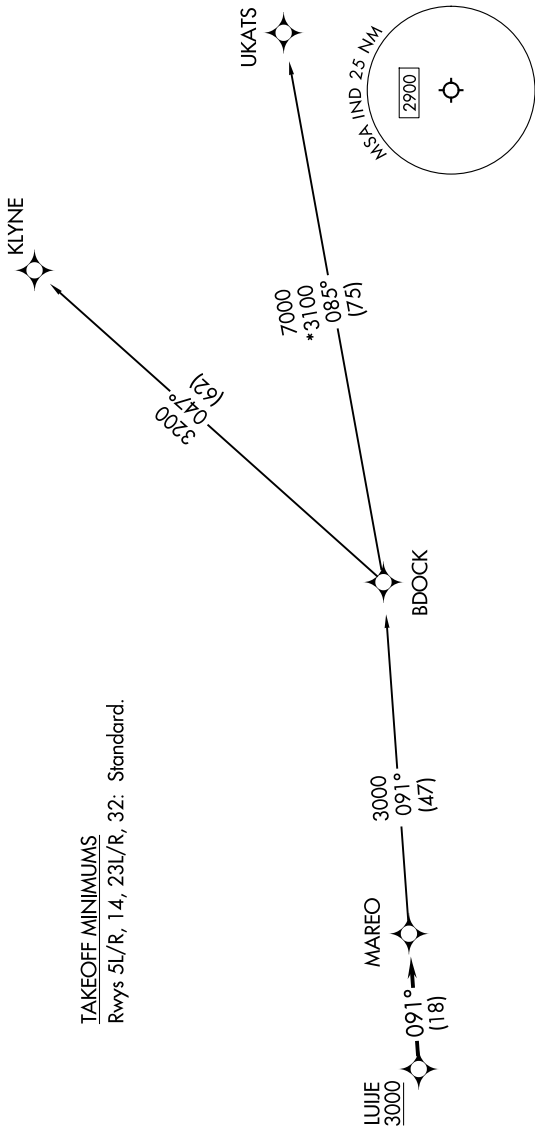
RNAV 1-DME/DME/IRU or GPS required.

RADAR required.

INDIANAPOLIS DEP CON
 124.95 317.8 (EAST)
 119.05 317.8 (WEST)
 D-ATIS
 134.25
 CINC DEL
 128.75 251.1
 CPDLC
 GND CON
 121.9
 INDY TOWER
 120.9 251.1

TAKEOFF MINIMUMS

Rwys 5L/R, 14, 23L/R, 32: Standard.



NOTE: Chart not to scale.

DEPARTURE ROUTE DESCRIPTION

ALL RUNWAYS: Climb on assigned heading for vectors to LUJJE on track 091° to MAREO, then on transition. Maintain (Jets) 5000/(Props) 3000, expect filed altitude 10 minutes after departure.

KLYNE TRANSITION (MAREO1.KLYNE):
UKATS TRANSITION (MAREO1.UKATS):

MAREO ONE DEPARTURE (RNAV)

(MAREO1.MAREO) 14MAY26

INDIANAPOLIS, INDIANA
INDIANAPOLIS INTL (IND)

EC-2, 14 MAY 2026 to 11 JUN 2026