

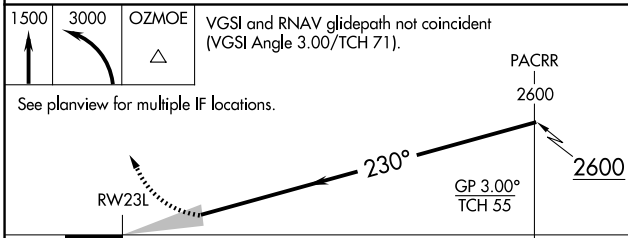
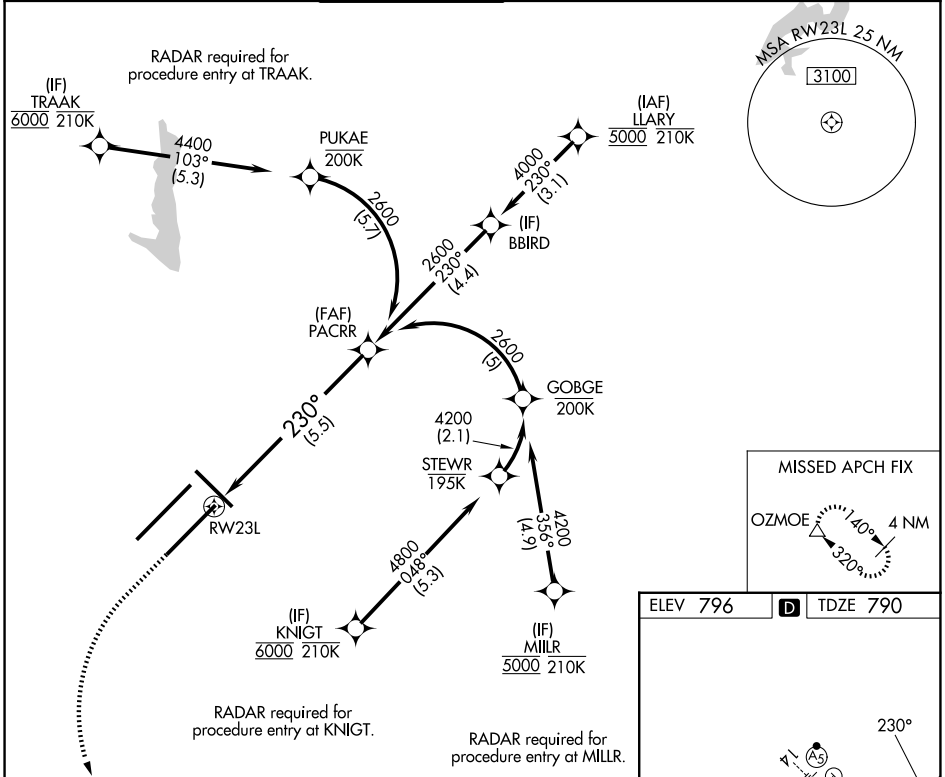
APP CRS	Rwy Ldg	10000
230°	TDZE	790
	Apt Elev	796

RNAV (RNP) Z RWY 23L

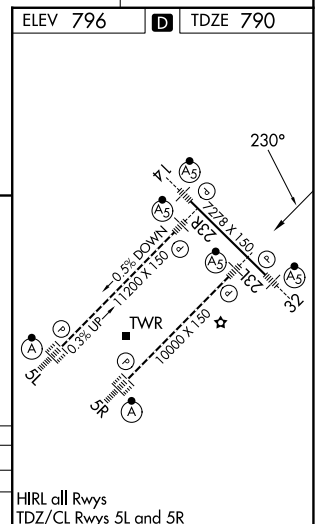
INDIANAPOLIS INTL (IND)

RNP AR APCH - GPS.		MALSRL	MISSED APPROACH: Climb to 1500, then climbing left turn to 3000 direct OZMOE and hold.
<p>▼ For uncompensated Baro-VNAV systems, procedure NA below -20°C or above 54°C. Simultaneous approach authorized for arrivals from LLARY only.</p>			

D-ATIS	INDIANAPOLIS APP CON	INDY TOWER	GND CON	CLNC DEL	CPDLC
134.25	128.175 317.8	120.9 251.1	121.9	128.75 251.1	



CATEGORY	A	B	C	D
RNP 0.30 DA		1175/35	385 (400-%)	



AUTHORIZATION REQUIRED

HIRL all Rwys
TDZ/CL Rwys 5L and 5R

EC-2, 14 MAY 2026 to 11 JUN 2026

EC-2, 14 MAY 2026 to 11 JUN 2026