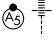


RNAV (RNP) Z RWY 23R

INDIANAPOLIS INTL (IND)

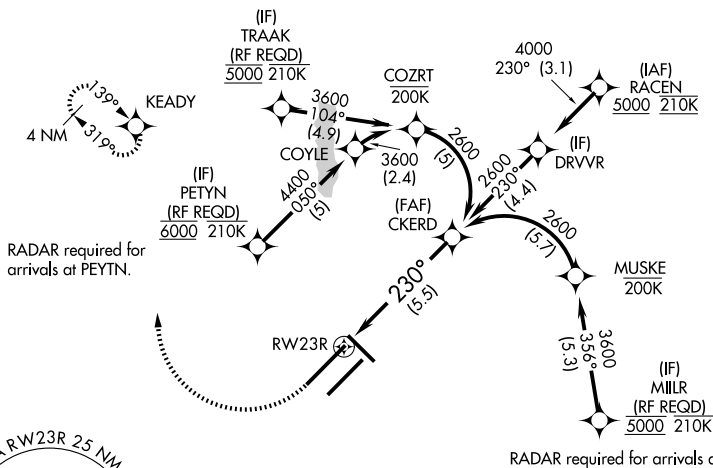
APP CRS 230°	Rwy Ldg TDZE Apt Elev	11200 783 796
------------------------	-----------------------------	--

▼ For uncompensated Baro-VNAV systems, procedure NA below -18°C (0°F) or above 54°C (130°F). GPS Required. For inoperative ALS, increase RNP 0.15 all Cats visibility to RVR 6000 and increase RNP 0.30 all Cats visibility to 1 3/8 SM. Simultaneous approach authorized.

MALSR

MISSED APPROACH:
 Climb to 1200 then climbing right turn to 3000 direct KEADY and hold.

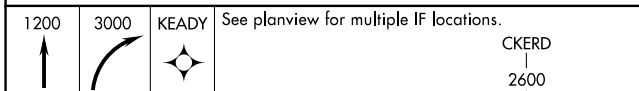
D-ATIS 134,25	INDIANAPOLIS APP CON 128.175 317.8	INDY TOWER 120.9 251.1	GND CON 121.9	CLNC DEL 128.75 251.1	CPDLC
-------------------------	--	----------------------------------	-------------------------	---------------------------------	-------

RADAR required for arrivals at TRAAK.



EC-2, 14 MAY 2026 to 11 JUN 2026

EC-2, 14 MAY 2026 to 11 JUN 2026



VGSI and RNAV glidepath not coincident (VGSI Angle 3.00/TCH 71).

RWY 23R

CKERD 2600

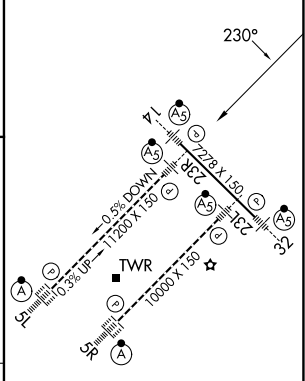
GP 3.00° TCH 55

-5.5 NM

CATEGORY	A	B	C	D
RNP 0.15 DA		1147/40	364 (400-3/4)	
RNP 0.30 DA		1206/50	423 (500-1)	

AUTHORIZATION REQUIRED

ELEV 796	D TDZE 783
----------	-------------------



HIRL all Rwys
 TDZ/CL Rwys 5L and 5R