


APP CRS 320°	Rwy Ldg 7278
	TDZE 793
	Apt Elev 796

RNAV (RNP) Z RWY 32

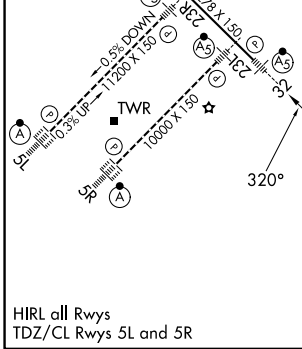
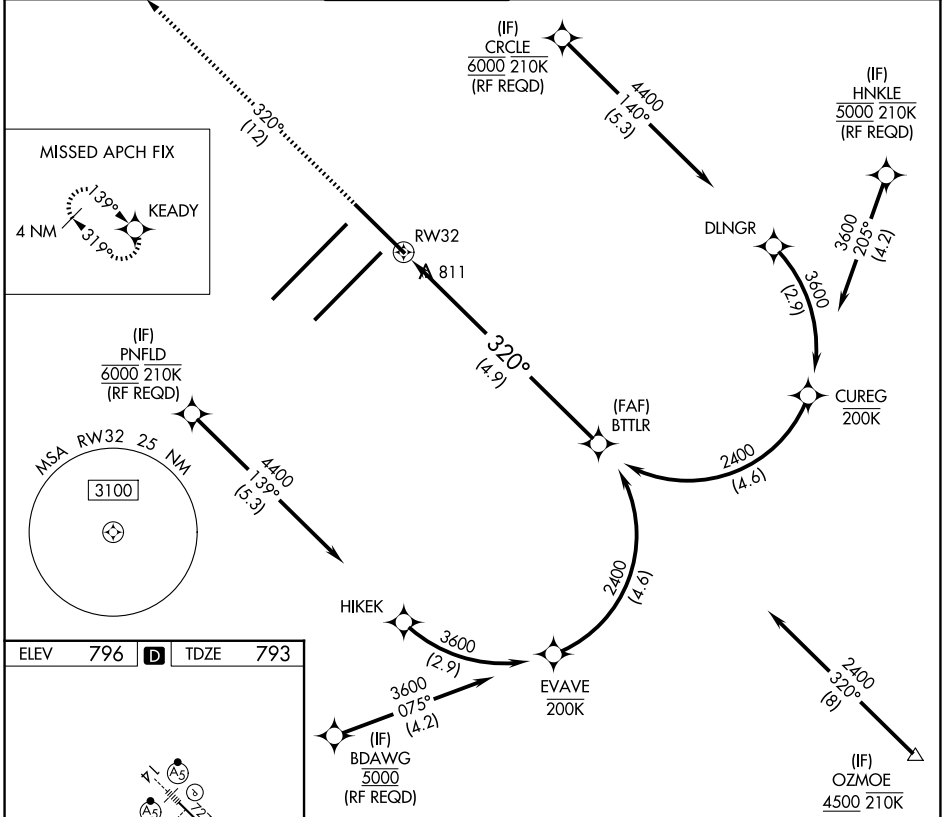
INDIANAPOLIS INTL (IND)

▽ For uncompensated Baro-VNAV systems, procedure NA below -18°C (2°F) or above 54°C (130°F). GPS required.

MALSR 

MISSED APPROACH: Climb to 3000 on track 320° to KEADY and hold.

D-ATIS 134.25	INDIANAPOLIS APP CON 128.175 317.8	INDY TOWER 120.9 251.1	GND CON 121.9	CLNC DEL 128.75 251.1	CPDLC
-------------------------	--	----------------------------------	-------------------------	---------------------------------	-------



CATEGORY	A	B	C	D
RNP 0.19 DA		1134/30	341 (400- $\frac{5}{8}$)	
RNP 0.30 DA		1196/45	403 (400- $\frac{5}{8}$)	

AUTHORIZATION REQUIRED

EC-2, 14 MAY 2026 to 11 JUN 2026

EC-2, 14 MAY 2026 to 11 JUN 2026