

APP CRS	Rwy Ldg	<b>10000</b>
<b>050°</b>	TDZE	<b>791</b>
	Apt Elev	<b>796</b>

# RNAV (RNP) Z RWY 5R

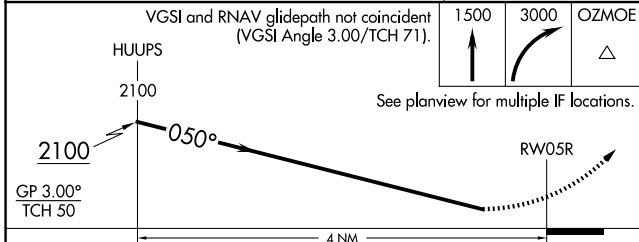
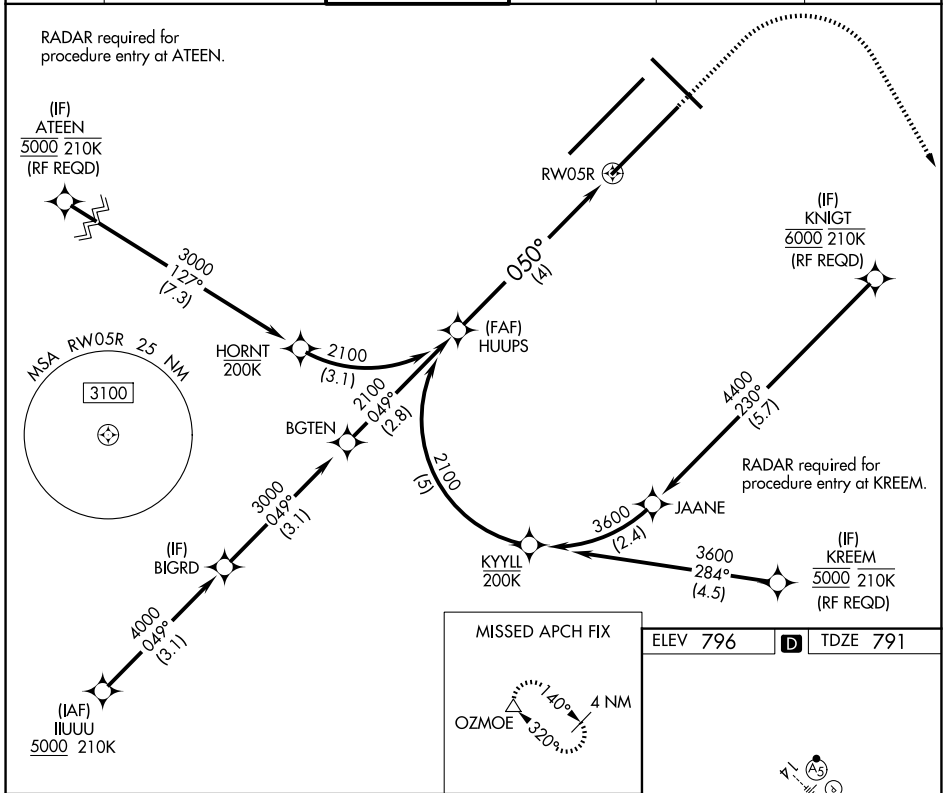
INDIANAPOLIS INTL (IND)

**▽** For uncompensated Baro-VNAV systems, procedure NA below -18°C (0°F) or above 54°C (130°F). GPS required. Simultaneous approach authorized, for arrivals from IUUU only.

ALSF-2

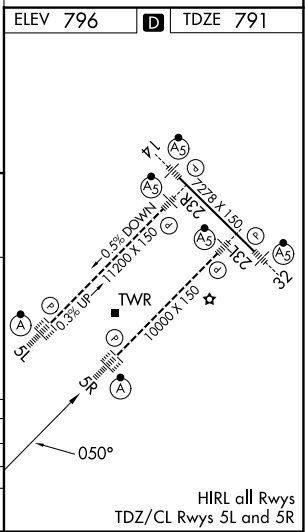
**MISSED APPROACH:**  
Climb to 1500, then climbing right turn to 3000 direct OZMOE and hold.

D-ATIS <b>134.25</b>	INDIANAPOLIS APP CON <b>128.175 317.8</b>	INDY TOWER <b>120.9 251.1</b>	GND CON <b>121.9</b>	CLNC DEL <b>128.75 251.1</b>	CPDLC
-------------------------	--	----------------------------------	-------------------------	---------------------------------	-------



CATEGORY	A	B	C	D
RNP 0.11 DA		1174/45	383 (400-¾)	
RNP 0.30 DA		1271/60	480 (500-1¼)	

**AUTHORIZATION REQUIRED**



EC-2, 14 MAY 2026 to 11 JUN 2026

EC-2, 14 MAY 2026 to 11 JUN 2026