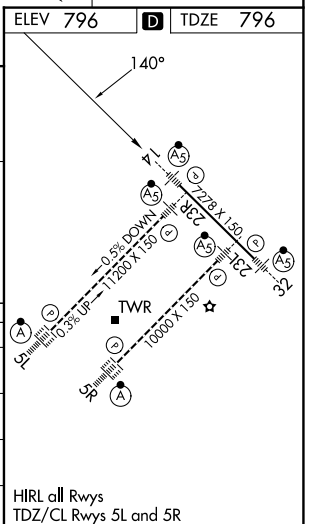
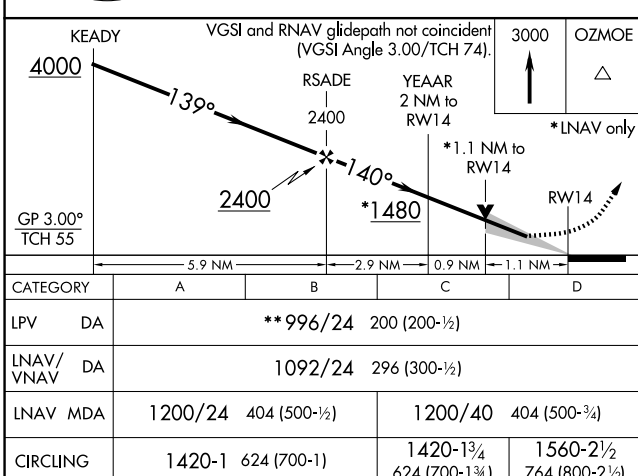
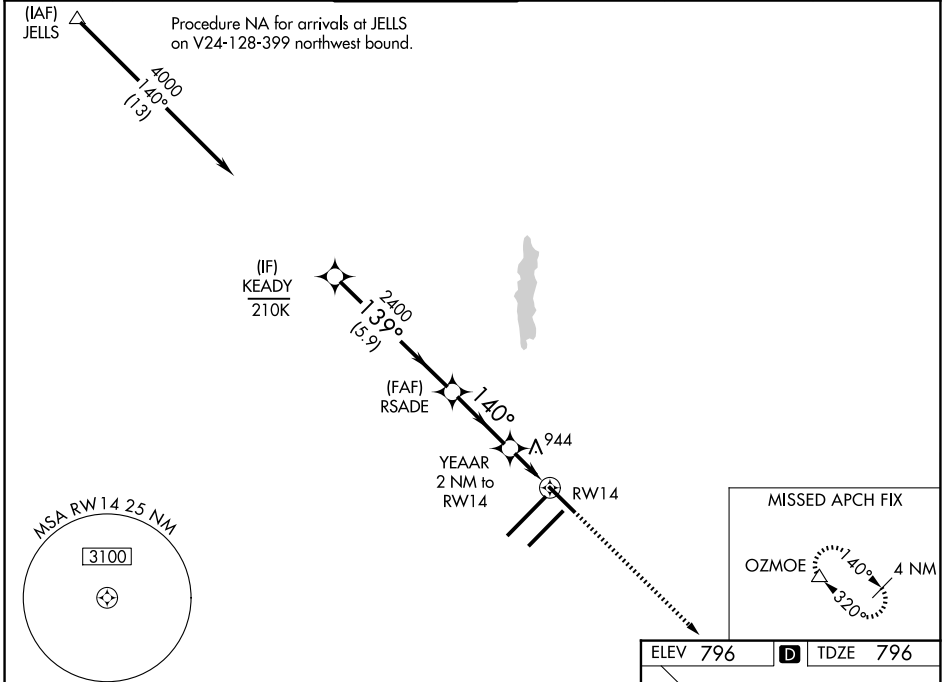


WAAS CH <b>42602</b> <b>W14A</b>	APP CRS <b>140°</b>	Rwy Ldg TDZE <b>7278</b> <b>796</b> Apt Elev <b>796</b>
--	------------------------	--

# RNAV (GPS) Y RWY 14

INDIANAPOLIS INTL (IND)

<p><b>⚠</b> For uncompensated Baro-VNAV systems, LNAV/VNAV NA below -18°C (0°F) or above 54°C (130°F). DME/DME RNP-0.3 NA. <b>**RVR 1800 authorized with use of FD or AP or HUD to DA.</b></p>			<p>MALSR</p>	<p>MISSED APPROACH: Climb to 3000 direct OZMOE and hold.</p>	
D-ATIS <b>134.25</b>	INDIANAPOLIS APP CON <b>128.175 317.8</b>	INDY TOWER <b>120.9 251.1</b>	GND CON <b>121.9</b>	CLNC DEL <b>128.75 251.1</b>	CPDLC



EC-2, 14 MAY 2026 to 11 JUN 2026

EC-2, 14 MAY 2026 to 11 JUN 2026