

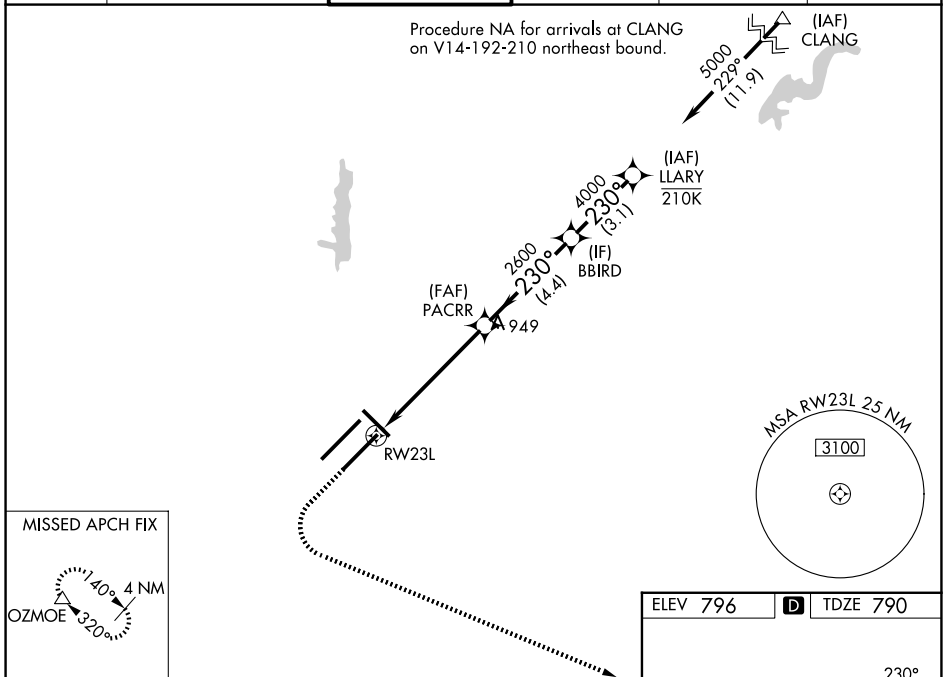
WAAS CH 86406 W23A	APP CRS 230°	Rwy Ldg 10000 TDZE 790 Apt Elev 796
--	------------------------	--

RNAV (GPS) Y RWY 23L

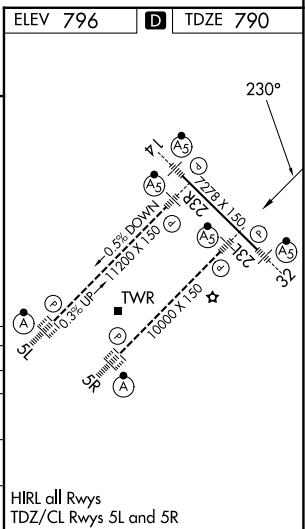
INDIANAPOLIS INTL (IND)

RNP APCH - GPS.		MALSR 	MISSED APPROACH: Climb to 1500 then climbing left turn to 3000 direct OZMOE and hold.
<p>▼ LNAV procedure NA during simultaneous operations. Simultaneous approach authorized.</p> <p>▲ Use of FD or AP required during simultaneous operations. For uncompensated Baro-VNAV systems, LNAV/VNAV NA below -20°C or above 54°C. For inop ALS, increase LNAV/VNAV all Cats visibility to RVR 4500. * RVR 1800 authorized with use of FD or AP or HUD to DA.</p>			

D-ATIS 134.25	INDIANAPOLIS APP CON 128.175 317.8	INDY TOWER 120.9 251.1	GND CON 121.9	CLNC DEL 128.75 251.1	CPDLC
-------------------------	--	----------------------------------	-------------------------	---------------------------------	-------



MISSED APCH FIX		OZMOE		VGSi and RNAV glidepath not coincident (VGSi Angle 3.00/TCH 71).	
				GP 3.00° TCH 55	
CATEGORY		A		B	
LPV DA*		990/24		200 (200-1/2)	
LNAV/VNAV DA		1078/24		288 (300-1/2)	
LNAV MDA		1180/24 390 (400-1/2)		1180/35 390 (400-3/8)	
CIRCLING		1420-1 624 (700-1)		1420-1 3/4 624 (700-1 3/4)	
				1560-2 1/2 764 (800-2 1/2)	



EC-2, 14 MAY 2026 to 11 JUN 2026

EC-2, 14 MAY 2026 to 11 JUN 2026