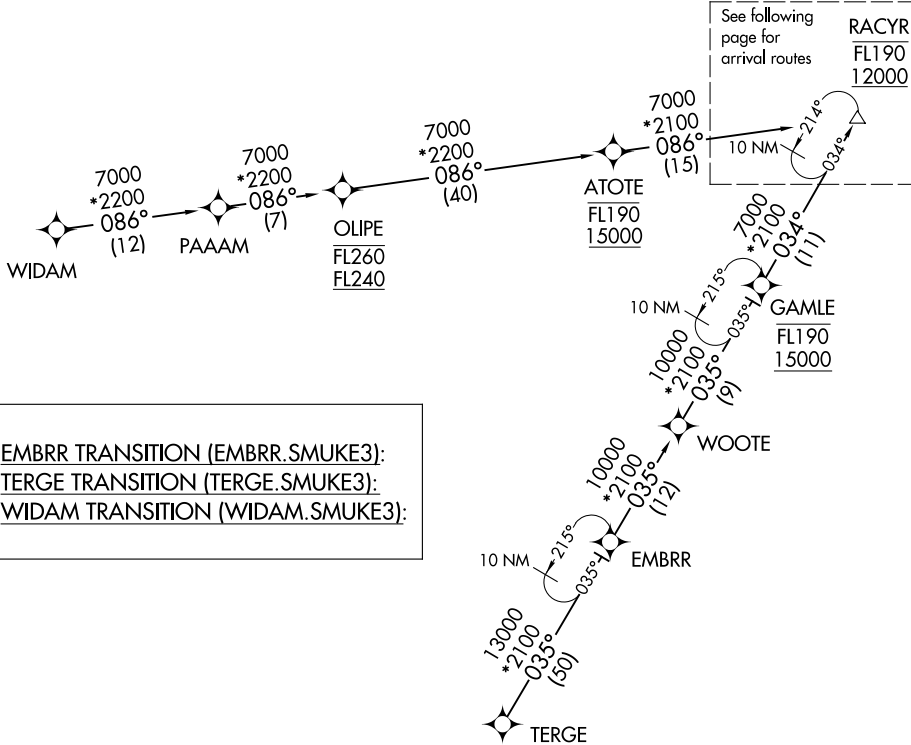


SMUKE THREE ARRIVAL (RNAV) Transition Routes

INDIANAPOLIS APP CON  
128.175 317.8  
D-ATIS  
134.25

RNAV 1 - DME/DME/IRU or GPS.  
RADAR required.



EC-2, 14 MAY 2026 to 11 JUN 2026

EC-2, 14 MAY 2026 to 11 JUN 2026

EMBRR TRANSITION (EMBRR.SMUKE3):  
TERGE TRANSITION (TERGE.SMUKE3):  
WIDAM TRANSITION (WIDAM.SMUKE3):

- NOTE: Expect descend via clearance and landing direction assignment by Indianapolis Center. Approach will assign landing rwy.
- NOTE: For non-GPS equipped aircraft landing rwy 23L; SHB DME must be operational.
- NOTE: For non-GPS equipped aircraft landing rwy 23R; SHB and VHP DMEs must be operational.
- NOTE: KIND Landing southwest select Rwy 23R transition. Expect runway assignment from Indianapolis APP CON prior to SMUKE.
- NOTE: KIND Landing northeast select Rwy 5L transition. Expect runway assignment from Indianapolis APP CON prior to SMUKE.

NOTE: Chart not to scale.

(CONTINUED ON FOLLOWING PAGE)



ARRIVAL ROUTE DESCRIPTION

From RACYR on track 036° to SMUKE, then on track 040° to FIIRE.

LANDING RUNWAY 5L: From FIIRE on track 035° to cross WESLE at or above 6000, then on track 043° to cross WAAYN at or above 5000 and at 210K. Expect RNAV RNP, GPS, ILS or LOC RWY 5L or RADAR vectors to final approach course.

LANDING RUNWAY 5R: From FIIRE on track 035° to cross WESLE at or above 6000, then on track 051° to cross IUUUU at or above 5000 and at 210K. Expect RNP, GPS, ILS or LOC RWY 5R or RADAR vectors to final approach course.

LANDING RUNWAY 14: From FIIRE on track 043° to cross EDIIE at or above 11000, then on track 043° to cross COCOO at or above 10000, then on track 045° to cross CIRAM at or above 7000 and at 230K, then on track 049° to cross PNFLD at 6000 and at 210K, then on track 320° to cross WONOK at 6000 and at 210K, then on track 320°. Expect RADAR vectors to final approach course.

LANDING RUNWAY 23L: From FIIRE on track 060° to cross CHERZ at or above 11000, then on track 060° to cross TTKAY at or above 10000, then on track 056° to cross EDODE at or above 7000 and at 230K, then on track 056° to cross KNIGT at 6000 and at 210K, then on track 050° to cross RAMEY at 6000 and at 210K, then on track 050°. Expect RADAR vectors to final approach course.

LANDING RUNWAY 23R: From FIIRE on track 033° to cross WOTSN at or above 11000, then on track 033° to cross DUBBX at or above 10000, then on track 037° to cross BLSTR at or above 7000 and at 230K, then on track 036° to cross PETYN at 6000 and at 210K, then on track 050° to cross ZOSAR at 6000 and at 210K, then on track 050°. Expect RADAR vectors to final approach course.

LANDING RUNWAY 32: From FIIRE on track 043° to cross EDIIE at or above 11000, then on track 043° to cross COCOO at or above 10000, then on track 045° to cross CIRAM at or above 7000 and at 230K, then on track 049° to cross PNFLD at 6000 and at 210K, then on track 139° to cross ZASNI at 6000 and at 210K, then on track 139°. Expect RADAR vectors to final approach course.

EC-2. 14 MAY 2026 to 11 JUN 2026

EC-2. 14 MAY 2026 to 11 JUN 2026