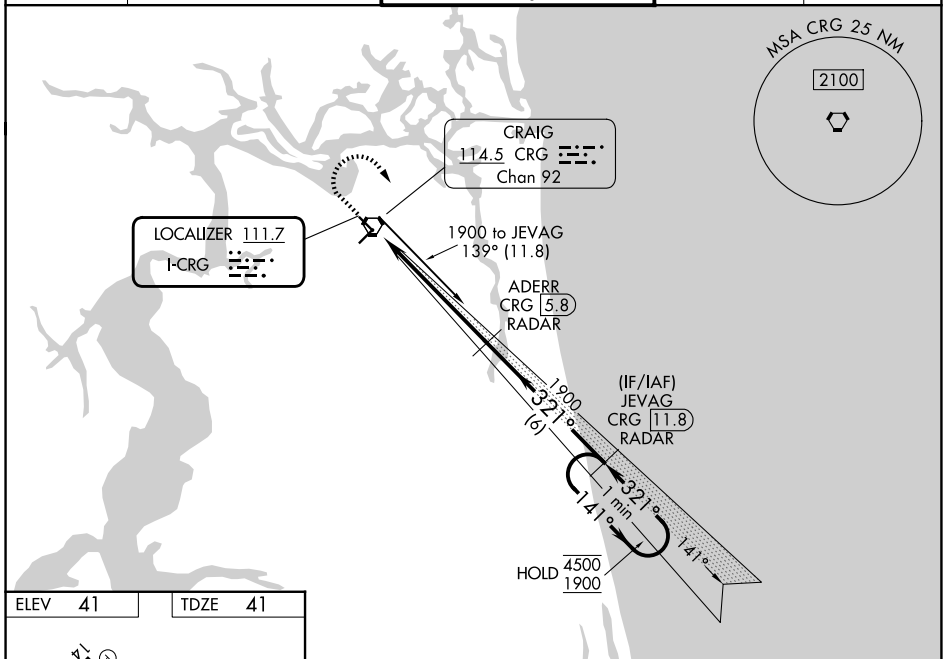


LOC I-CRG 111.7	APP CRS 321°	Rwy Ldg 4008 TDZE 41 Apt Elev 41
---------------------------	------------------------	---

ILS or LOC RWY 32

JACKSONVILLE EXEC AT CRAIG (CRG)

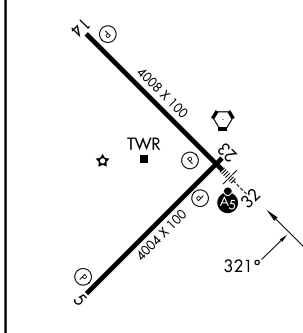
DME or RADAR required.		MALSR 	MISSED APPROACH: Climb to 700 then climbing right turn to 2100 on heading 180° and on CRG VORTAC R-139 to JEVAG/CRG VORTAC 11.8 DME/RADAR and hold.	
⚠ Rwy 32 helicopter visibility reduction below 3/4 SM NA. Circling Rwy 5 NA at night. DME from CRG VORTAC. DME use requires simultaneous reception of I-CRG and CRG DME. When local altimeter setting not received, use JAX altimeter setting and increase S-ILS 32 DA to 324 feet; increase all MDAs 40 feet and S-LOC 32 visibility Cat C/D 1/4 SM, and Circling visibility Cat C 1/4 SM. For inop ALS, increase S-LOC 32 Cats A/B visibility to 1 SM.				
ATIS 125.4	JACKSONVILLE APP CON 124.9 308.4	CRAIG TOWER ★ 132.1 (CTAF) 269.525	GND CON 121.8	UNICOM 122.95



SE-3, 14 MAY 2026 to 11 JUN 2026

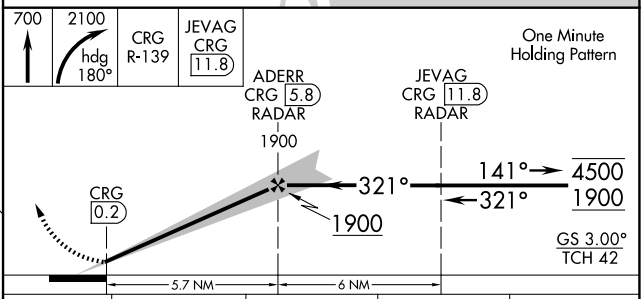
SE-3, 14 MAY 2026 to 11 JUN 2026

ELEV 41	TDZE 41
---------	---------



- MIRL Rwy 5-23
- HIRL Rwy 14-32
- REIL Rws 14 and 23

FAF to MAP 5.7 NM					
Knots	60	90	120	150	180
Min:Sec	5:42	3:48	2:51	2:17	1:54



CATEGORY	A	B	C	D
S-ILS 32	291-1		250 (300-1)	
S-LOC 32	480-1		439 (500-1)	
CIRCLING	500-1	600-1	620-1½	800-2½
	459 (500-1)	559 (600-1)	579 (600-1½)	759 (800-2½)