

WAAS CH <b>63031</b> <b>W14A</b>	APP CRS <b>141°</b>	Rwy Ldg <b>4008</b> TDZE <b>41</b> Apt Elev <b>41</b>
--	------------------------	---

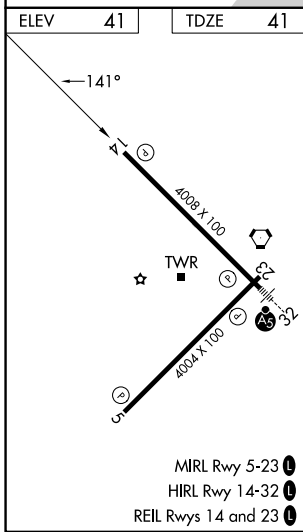
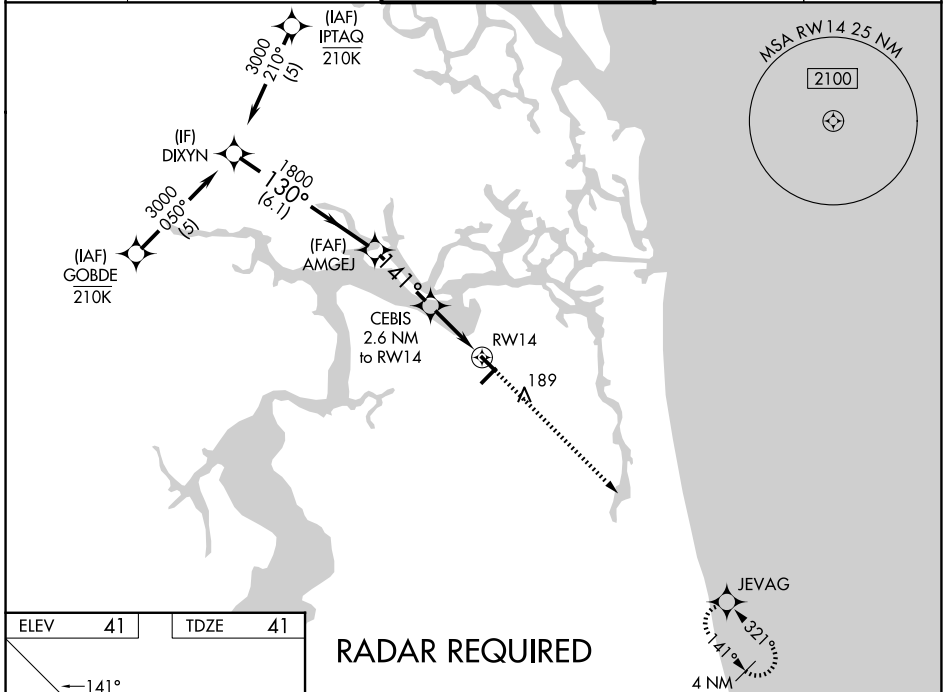
# RNAV (GPS) RWY 14

JACKSONVILLE EXEC AT CRAIG (CRG)

**⚠** Procedure NA at night. Baro-VNAV NA when using Jacksonville Intl altimeter setting. For uncompensated Baro-VNAV systems, LNAV/VNAV NA below -3°C (27°F) or above 54°C (130°F).  
**⚠** DME/DME RNP-0.3 NA. Helicopter visibility reduction below 1 SM NA. When local altimeter setting not received, use Jacksonville Intl altimeter setting; increase LPV DA to 325 feet; increase LNAV/VNAV DA to 450 feet and all visibilities ½ SM; increase all MDAs 40 feet and Circling visibility Cat C ¼ SM.

MISSED APPROACH: Climb to 1900 direct JEVAG and hold.

ATIS <b>125.4</b>	JACKSONVILLE APP CON <b>124.9 308.4</b>	CRAIG TOWER ★ <b>132.1 (CTAF) 269.525</b>	GND CON <b>121.8</b>	UNICOM <b>122.95</b>
----------------------	--	--	-------------------------	-------------------------



## RADAR REQUIRED

	DIXYN	AMGEJ	CEBIS 2.6 NM to RW14	RW14
	3000			
	130°	141°		
	1800		*900	
	6.1 NM	2.8 NM	2.6 NM	
GP 3.00° TCH 44				
CATEGORY	A	B	C	D
LPV DA	293-1		252 (300-1)	
LNAV/VNAV DA	418-1¼		377 (400-1¼)	
LNAV MDA	500-1	459 (500-1)	500-1⅓	459 (500-1⅓)
CIRCLING	500-1 459 (500-1)	600-1 559 (600-1)	620-1½ 579 (600-1½)	800-2½ 759 (800-2½)

1900 JEVAG

\*LNAV only.

SE-3, 14 MAY 2026 to 11 JUN 2026

SE-3, 14 MAY 2026 to 11 JUN 2026