

# HI-TACAN Z RWY 10

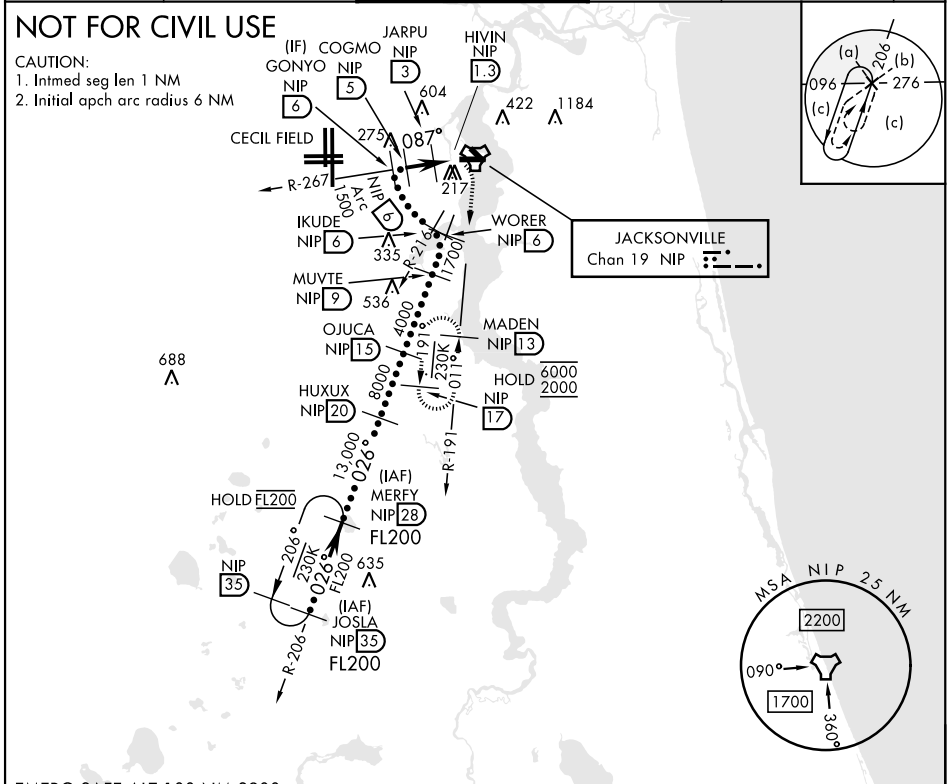
TACAN Chan <b>19</b>	NIP	APCH CRS <b>087°</b>	Rwy ldg TDZE Arpt Elev	<b>8006</b> <b>21</b> <b>23</b>
-------------------------	-----	-------------------------	------------------------------	---------------------------------------

[USN]

JACKSONVILLE NAS (TOWERS FLD) (KNIP)

<p>▼ *When ALS inop, increase CAT CDE vis to 1½ miles.</p>	<p>ALSF-1</p>	<p>MISSED APPROACH: Climb to 2000 direct NIP TACAN and turn right outbound R-191 to MADEN and hold.</p>
	<p>ATIS <b>124.35 290.425</b></p>	

<p>APP CON <b>127.775 377.075</b></p>	<p>NAVY JACKSONVILLE TOWER <b>125.15 (CTAF) 340.2</b></p>	<p>GND CON <b>128.6 336.4</b></p>	<p>CLNC DEL <b>134.775 0353.675</b></p>	<p>ASR/PAR</p>
---	---	---------------------------------------	---	----------------

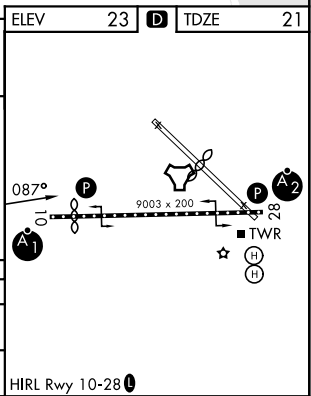


SE-3, 14 MAY 2026 to 11 JUN 2026

SE-3, 14 MAY 2026 to 11 JUN 2026

EMERG SAFE ALT 100 NM 2800

	<p>2000</p> <p>NIP</p> <p>MADEN NIP 13</p>
<p>GONYO NIP 6</p> <p>COGMO NIP 5</p> <p>JARPU NIP 3</p> <p>HVIN NIP 1.3</p> <p>NIP TACAN</p>	<p>1500</p> <p>1400</p> <p>760</p> <p>2.97° TCH 51</p> <p>2 NM</p> <p>1.7 NM</p> <p>0.5</p>
CATEGORY	C D E
S-10*	420-¾ 399 (400-¾)
CIRCLING	520-1½ 497 (500-1½) 760-2¼ 737 (800-2¼) 920-3 897 (900-3)



# HI-TACAN Z RWY 10