

HI-TACAN Z RWY 28

TACAN NIP Chan 19	APCH CRS 286°	Rwy Idg 9003 TDZE 13 Arprt Elev 23	[USN]	JACKSONVILLE NAS (TOWERS FLD) (KNIP)
--------------------------	----------------------	---	-------	--------------------------------------

▼ * When ALS inop, increase CAT CDE vis to 1½ miles.

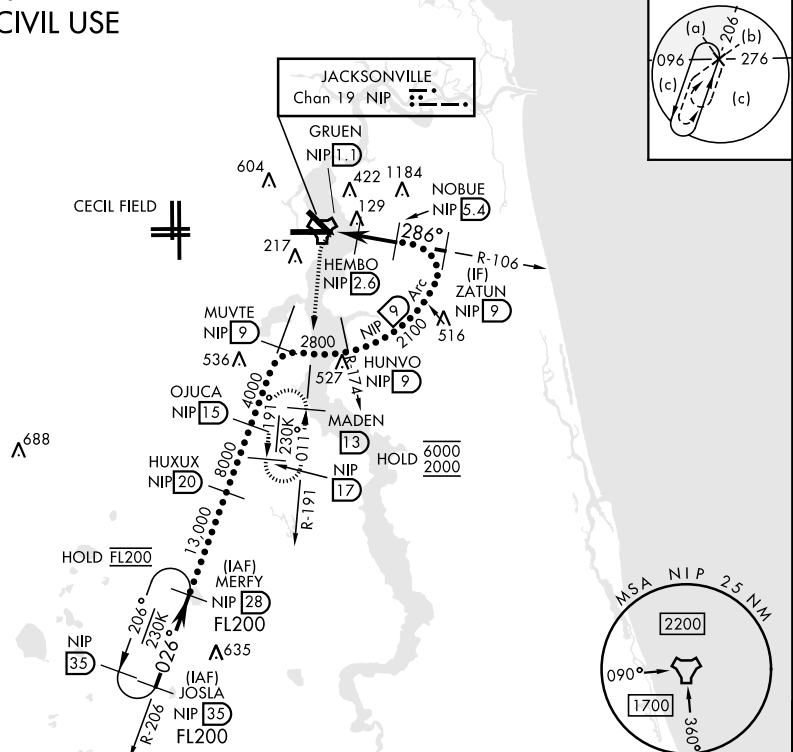
SALSF 

MISSED APPROACH: Climb to 2000 direct NIP TACAN and turn left outbound R-191 to MADEN and hold.

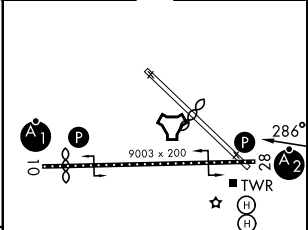
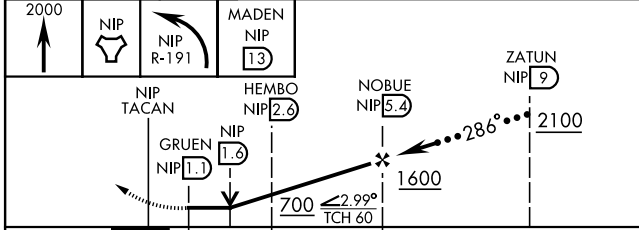
ATIS 124.35 290.425	APP CON 127.775 377.075	NAVY JACKSONVILLE TOWER 125.15 (CTAF) 340.2	GND CON 128.6 336.4	CLNC DEL 134.775 0353.675	ASR/PAR
----------------------------	--------------------------------	--	----------------------------	----------------------------------	---------

CAUTION: Inmed seg len 3.6 NM.


NOT FOR CIVIL USE



EMERG SAFE ALT 100 NM 2800	ELEV 23	TDZE 13
----------------------------	----------------	----------------



CATEGORY	C	D	E
S-28*		400-7/8 387 (400-7/8)	
CIRCLING	520-1½ 497 (500-1½)	760-2¼ 737 (800-2¼)	920-3 897 (900-3)

HIRL Rwy 10-28 

HI-TACAN Z RWY 28

SE-3, 14 MAY 2026 to 11 JUN 2026

SE-3, 14 MAY 2026 to 11 JUN 2026