

# RNAV (RNP) Y RWY 10

APCH CRS	Rwy Idg	8006
096°	TDZE	21
	Arprt Elev	23

(USN)

JACKSONVILLE NAS (TOWERS FLD) (KNIP)

RNP AR APCH - GPS, RF.

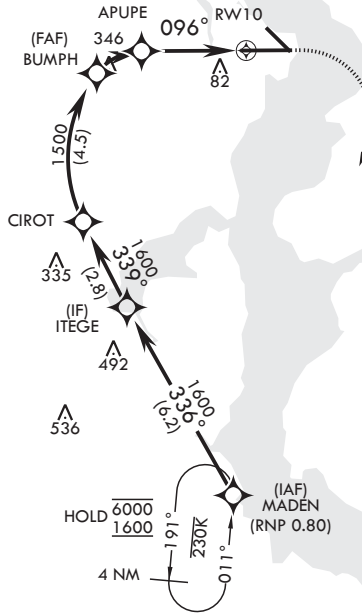
▼ \* When ALS inop, increase vis to 1 mile.



MISSED APPROACH: Climb to 600 then climbing right turn to 2000 direct MADEN and hold.

ATIS	APP CON/DEP CON	TOWER	GND CON	CLNC DEL	ASR/PAR
124.35 290.425	127.775 377.075	125.15 (CTAF) 340.2	128.6 336.4	134.775 353.675	

For uncompensated Baro-VNAV systems, procedure NA below -15°C (5°F) or above 54°C (129°F).



## AUTHORIZATION REQUIRED

EMERG SAFE ALT 100 NM 2800

MADEN		ITEGE		CIROT		BUMPH		APUPE		RWY 10	
6000 1600		336° 1600		339° 1600		1500		1027		096°	
GP 3.00° TCH 51											
						1.5 NM		3 NM			
CATEGORY	A		B		C		D				
RNP 0.30 DA*	389-5%		368		(400-5%)				HIRL Rwy 10-28		

600

2000

MADEN

ELEV 23

See Supp for declared dist.

TDZE 21

# RNAV (RNP) Y RWY 10

SE-3, 14 MAY 2026 to 11 JUN 2026

SE-3, 14 MAY 2026 to 11 JUN 2026