

JACKSONVILLE, FLORIDA

RNAV (GPS) Z RWY 28

WAAS CH 46924 W28A	APCH CRS 276°	Rwy ldg TDZE 13 Arprt Elev 23	9003
---------------------------------	-------------------------	---------------------------------------------------	-------------

(USN)

JACKSONVILLE NAS (TOWERS FLD) (KNIP)

RNP APCH

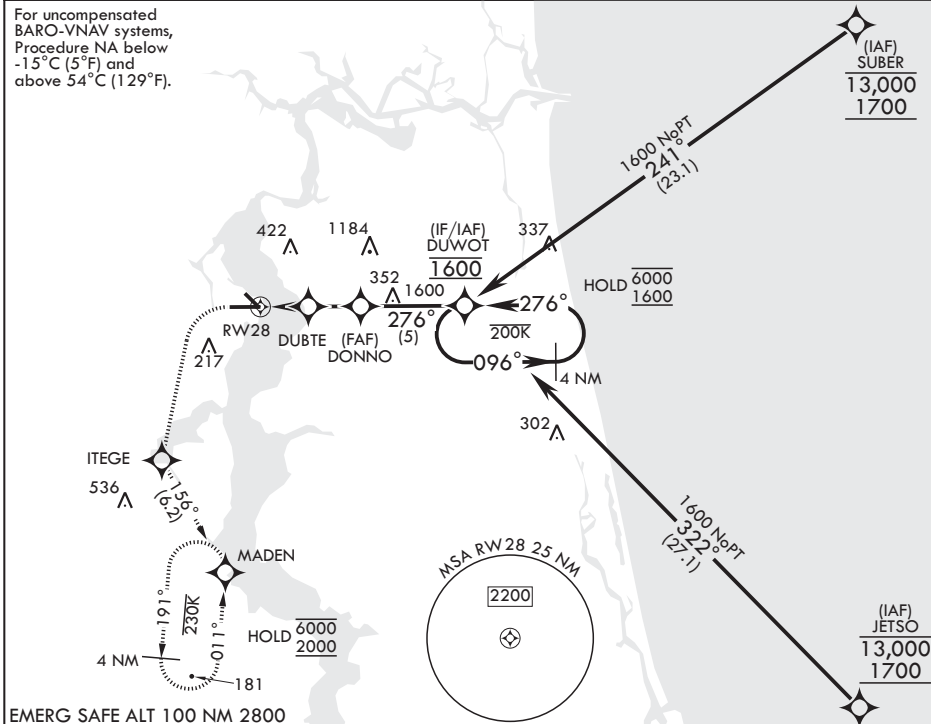


MISSED APPROACH: Climb to 600 then climbing left turn to 2000 direct ITEGE, track 156° to MADEN and hold.

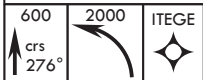
▼ * When ALS inop, increase CAT BCD to 7/8 mile.
** When ALS inop, increase CAT AB vis to 1 mile, CAT CD vis to 1 1/8 miles.

ATIS 124.35 290.425	APP CON/DEP CON 127.775 377.075	TOWER 125.15 (CTAF) 340.2	GND CON 128.6 336.4	CLNC DEL 134.775 0 353.675	ASR/PAR
-------------------------------	-------------------------------------------	-------------------------------------	-------------------------------	--------------------------------------	---------

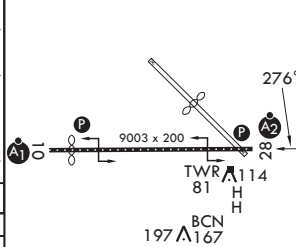
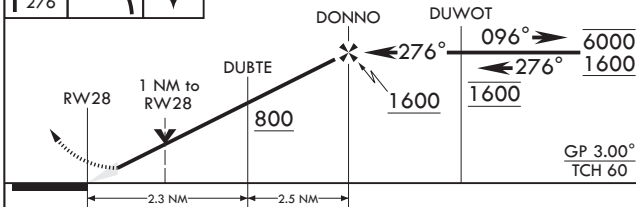
For uncompensated BARO-VNAV systems, Procedure NA below -15°C (5°F) and above 54°C (129°F).



EMERG SAFE ALT 100 NM 2800



ELEV 23 See Supp for declared dist. TDZE 13



CATEGORY	A	B	C	D
LPV DA	213-3/4	200	(200-3/4)	
LNAV/VNAV DA*	263-3/4 250 (300-3/4)	274-3/4 261 (300-3/4)	282-3/4 269 (300-3/4)	293-3/4 280 (300-3/4)
LNAV MDA**	400-3/4 387 (400-3/4)	400-3/8 387 (400-3/8)	520-1 1/2 497 (500-1 1/2)	760-2 1/4 737 (800-2 1/4)
CIRCLING	500-1 477 (500-1)			

HIRL Rwy 10-28

JACKSONVILLE, FLORIDA

30°14'N - 81°41'W

JACKSONVILLE NAS (TOWERS FLD) (KNIP)

Amdt 2 30OCT25

RNAV (GPS) Z RWY 28

SE-3, 14 MAY 2026 to 11 JUN 2026

SE-3, 14 MAY 2026 to 11 JUN 2026