

TACAN Y RWY 10

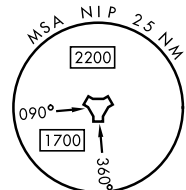
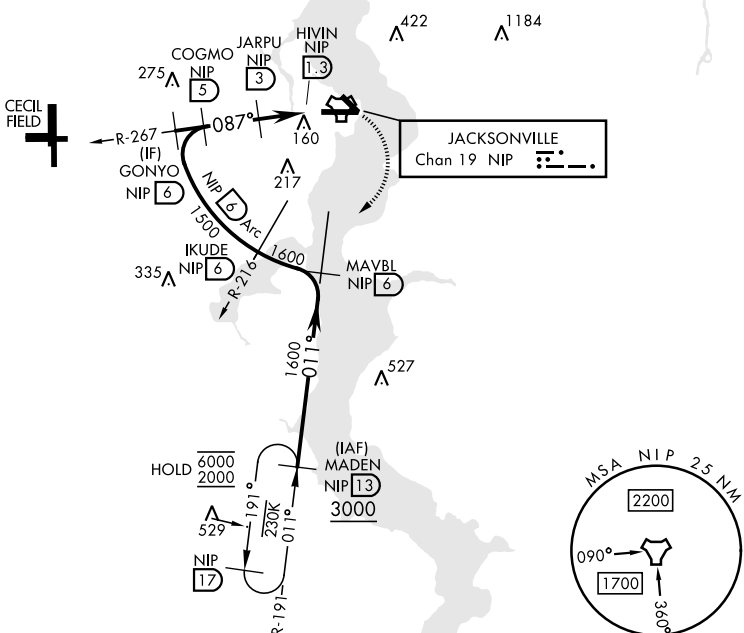
TACAN NIP Chan 19	APCH CRS 087°	Rwy Idg TDZE 8006 Arprt Elev 23	[USN]	JACKSONVILLE NAS (TOWERS FLD) (KNIP)
--------------------------	----------------------	--	-------	--------------------------------------

▼ * When ALS inop, increase CAT AB vis to 1 mile, CAT CD vis to 1½ miles.

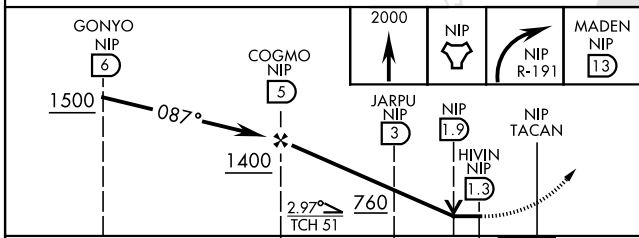
 ALSF-1 MISSED APPROACH: Climb to 2000 direct NIP TACAN and turn right outbound R-191 to MADEN and hold.

ATIS 124.35 290.425	APP CON 127.775 377.075	NAVY JACKSONVILLE TOWER 125.15 (CTAF) 340.2	GND CON 128.6 336.4	CLNC DEL 134.775 0353.675	ASR/PAR
----------------------------	--------------------------------	--	----------------------------	----------------------------------	---------

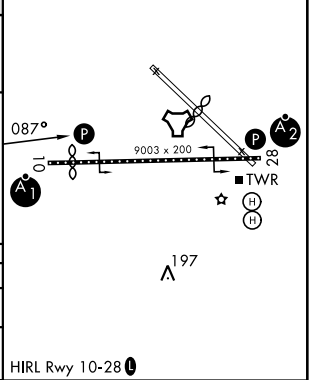
- CAUTION:
1. Inmed seg len 1 NM.
 2. Initial apch arc radius 6 NM.



EMERG SAFE ALT 100 NM 2800



ELEV 23	TDZE 21
---------	---------



CATEGORY	A	B	C	D
S-10*	420-½ 399 (400-½)		420-¾ 399 (400-¾)	
CIRCLING	500-1 477 (500-1)		520-1½ 497 (500-1½)	760-2¼ 737 (800-2¼)

HIRL Rwy 10-28

TACAN Y RWY 10

SE-3, 14 MAY 2026 to 11 JUN 2026

SE-3, 14 MAY 2026 to 11 JUN 2026