

TACAN Y RWY 28

TACAN NIP Chan 19	APCH CRS 286°	Rwy Idg TDZE Arprt Elev 9003 13 23
--------------------------	----------------------	---

[USN]

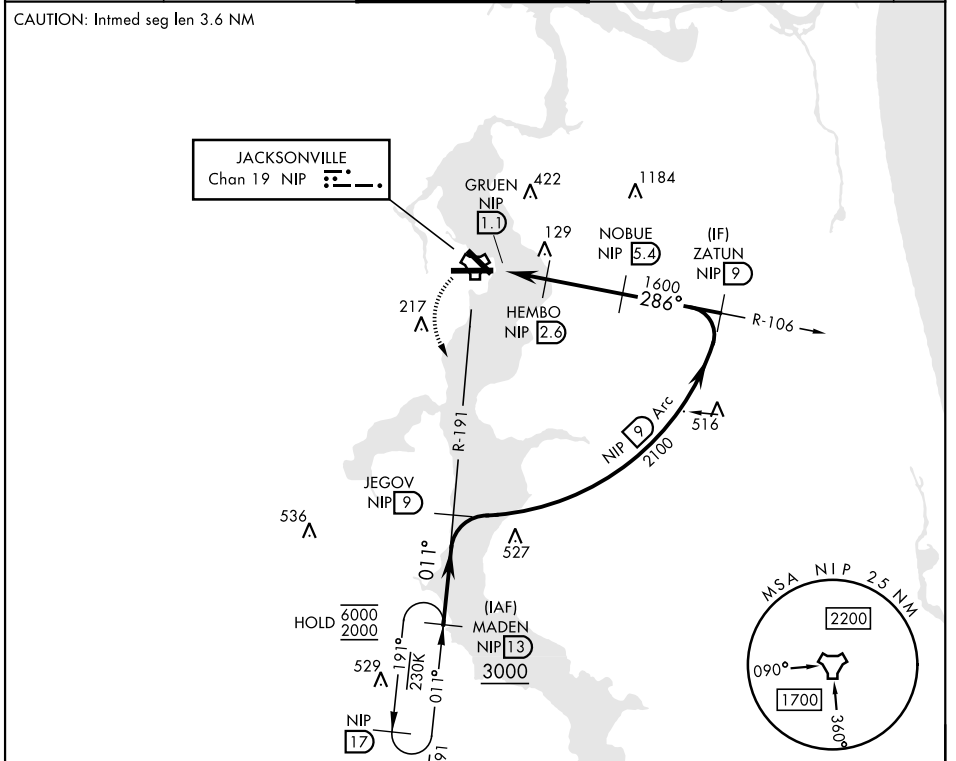
JACKSONVILLE NAS (TOWERS FLD) (KNIP)

▼ *When ALS inop, increase CAT AB vis to 1 mile, CAT CD vis to 1½ miles.

SALSF

MISSED APPROACH: Climb to 2000 direct NIP TACAN and turn left outbound R-191 to MADEN and hold.

ATIS 124.35 290.425	APP CON 127.775 377.075	NAVY JACKSONVILLE TOWER 125.15 (CTAF) 340.2	GND CON 128.6 336.4	CLNC DEL 134.775 353.675	ASR/PAR
----------------------------	--------------------------------	--	----------------------------	---------------------------------	---------



EMERG SAFE ALT 100 NM 2800

CATEGORY	A	B	C	D
S-28*	400-¾ 387 (400-¾)		400-⅞ 387 (400-⅞)	
CIRCLING	500-1 477 (500-1)		520-1½ 497 (500-1½)	760-2¼ 737 (800-2¼)

HRL Rwy 10-28

ELEV	23	TDZE	13
------	----	------	----

TACAN Y RWY 28

SE-3, 14 MAY 2026 to 11 JUN 2026

SE-3, 14 MAY 2026 to 11 JUN 2026