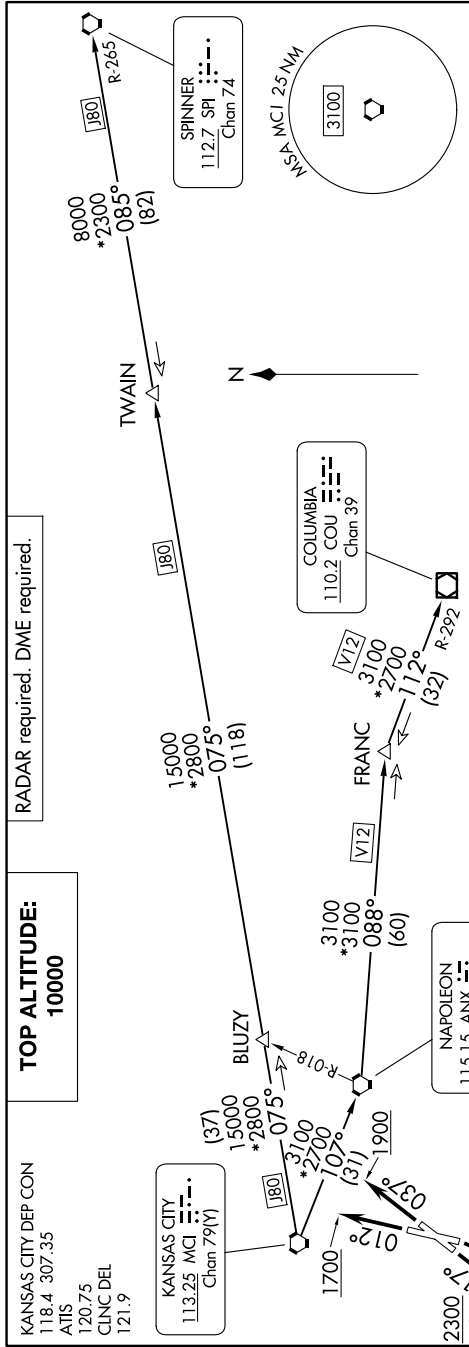


# LAKES FIVE DEPARTURE

NC-3, 14 MAY 2026 to 11 JUN 2026



KANSAS CITY DEP CON  
118.4 307.35  
ATIS  
120.75  
CLINC DEL  
121.9

**TOP ALTITUDE:**  
10000

**DEPARTURE ROUTE DESCRIPTION**

**TAKEOFF RUNWAY 1:** Climb on heading 012° to 1700, thence. . . .

**TAKEOFF RUNWAY 4:** Climb on heading 037° to 1900, thence. . . .

**TAKEOFF RUNWAY 19:** Climbing right turn heading 215° to 2500, thence. . . .

**TAKEOFF RUNWAY 22:** Climb on heading 217° to 2300, thence. . . .

. . . climb on assigned heading for RADAR vectors to appropriate route. Maintain 10000 or as assigned by ATC. Expect filed altitude 10 minutes after departure.

**COLUMBIA TRANSITION (LAKES5.COU):** From over MCI VORTAC on MCI R-107 to ANX VORTAC, then on ANX R-088 and COU R-292 to COU VOR/DME.

**FRANC TRANSITION (LAKES5.FRANC):** From over MCI VORTAC on MCI R-107 to ANX VORTAC, then on ANX R-088 to FRANC.

**SPINNER TRANSITION (LAKES5.SPI):** From over MCI VORTAC on MCI R-107 to SPI R-265 to TWAIN, then on SPI R-265 to SPI VORTAC.

**TWAIN TRANSITION (LAKES5.TWAIN):** From over MCI VORTAC on MCI R-075 and SPI R-265 to TWAIN.

**TAKEOFF MINIMUMS**

Rwy 1: 300-17' or standard with minimum climb of 201' per NM to 1000.

Rwy 4: Standard.

Rwy 19: Standard with minimum climb of 465' per NM to 2500.

Rwy 22: 300-1½' or standard with minimum climb of 260' per NM to 1000.

NOTE: Chart not to scale.

NC-3, 14 MAY 2026 to 11 JUN 2026