

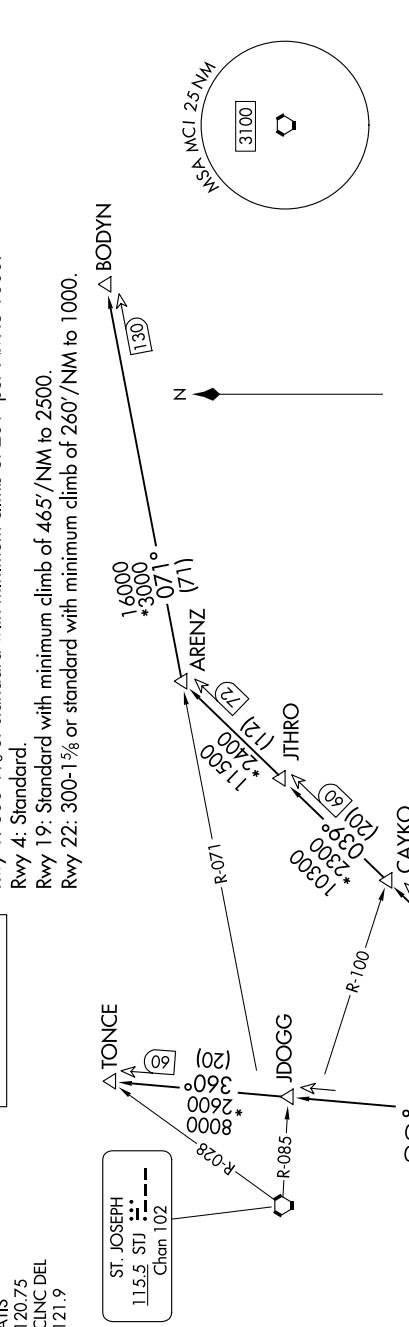
ROYAL TWO DEPARTURE

NC-3, 14 MAY 2026 to 11 JUN 2026

TOP ALTITUDE:
10000

TAKEOFF MINIMUMS
Rwy 1: 300-1 $\frac{1}{8}$ or standard with minimum climb of 201' per NM to 1000.
Rwy 4: Standard.
Rwy 19: Standard with minimum climb of 465'/NM to 2500.
Rwy 22: 300-1 $\frac{1}{8}$ or standard with minimum climb of 260'/NM to 1000.

KANSAS CITY DEP CON
118.4 307.35
ATIS
120.75
CLNC DEL
121.9



ROYAL TWO DEPARTURE

DEPARTURE ROUTE DESCRIPTION

TAKEOFF RUNWAY 1: Climb on heading 012° to 1700, thence. . . .

TAKEOFF RUNWAY 4: Climb on heading 037° to 1900, thence. . . .

TAKEOFF RUNWAY 19: Climbing right turn heading 215° to 2500, thence. . . .

TAKEOFF RUNWAY 22: Climb on heading 217° to 2300, thence. . . .

. . . climb on assigned heading for RADAR vectors to appropriate route. Maintain 10000, expect filed altitude 10 minutes after departure.

ARENZ TRANSITION (ROYAL2.ARENZ): From over MCI VORTAC on MCI R-039 to ARENZ.

BODYN TRANSITION (ROYAL2.BODYN): From over MCI VORTAC on MCI R-039 to ARENZ, then on STJ R-071 to BODYN.

TONCE TRANSITION (ROYAL2.TONCE): From over MCI VORTAC on MCI R-360 to TONCE.

NC-3, 14 MAY 2026 to 11 JUN 2026

NOTE: Chart not to scale.