

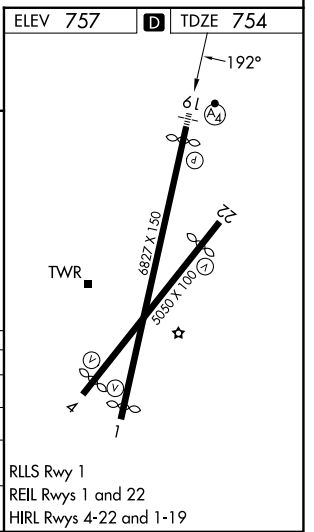
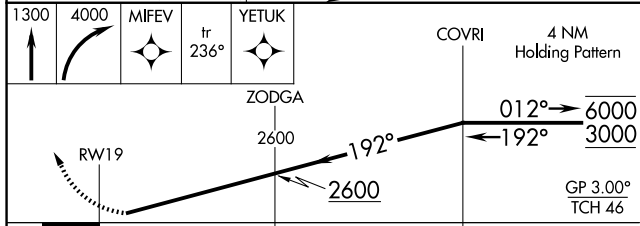
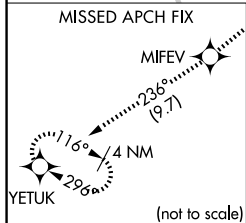
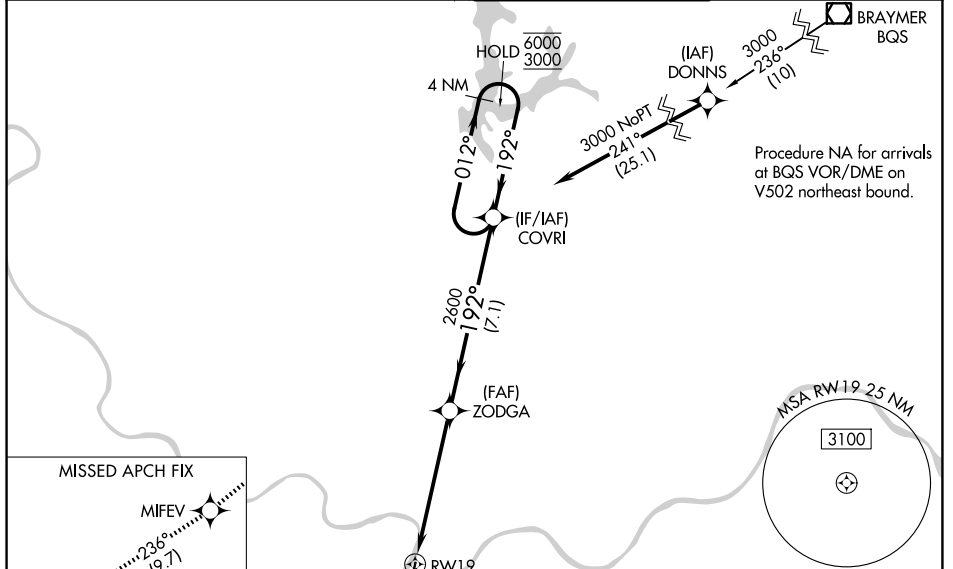
WAAS CH <b>90320</b> <b>W19A</b>	APP CRS <b>192°</b>	Rwy Ldg TDZE Apt Elev	<b>6526</b> <b>754</b> <b>757</b>
--	------------------------	-----------------------------	---

# RNAV (GPS) Z RWY 19

KANSAS CITY DOWNTOWN/WHEELER FLD (MKC)

RNP APCH - GPS.		MALSF ④	MISSED APPROACH: Climb to 1300 then climbing right turn to 4000 direct MIFEV and on track 236° to YETUK and hold. * Missed approach requires minimum climb of 300 feet per NM to 1500. # Missed approach requires minimum climb of 360 feet per NM to 2400.
For uncompensated Baro-VNAV systems, LNAV/VNAV NA below -19°C or above 54°C. Rwy 19 helicopter visibility reduction below RVR 4000 NA. For inop ALS, increase LPV* visibility all Cats to RVR 4500, and LPV visibility all Cats to RVR 5500.			

ATIS <b>120.75</b>	KANSAS CITY APP CON <b>118.4 307.35</b>	DOWNTOWN TOWER <b>133.3 233.7</b>	GND CON <b>121.9</b>
-----------------------	--	--------------------------------------	-------------------------



CATEGORY	A	B	C	D
LPV DA*		1021/40	267 (300-3/4)	
LPV DA		1097/40	343 (400-3/4)	
LNAV/VNAV DA#		1077/40	323 (400-3/4)	
LNAV/VNAV DA		1468-1 3/4	714 (800-1 3/4)	

NC-3, 14 MAY 2026 to 11 JUN 2026

NC-3, 14 MAY 2026 to 11 JUN 2026