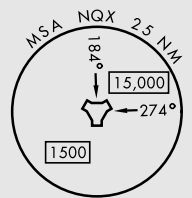
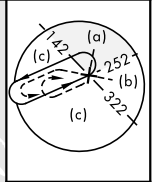
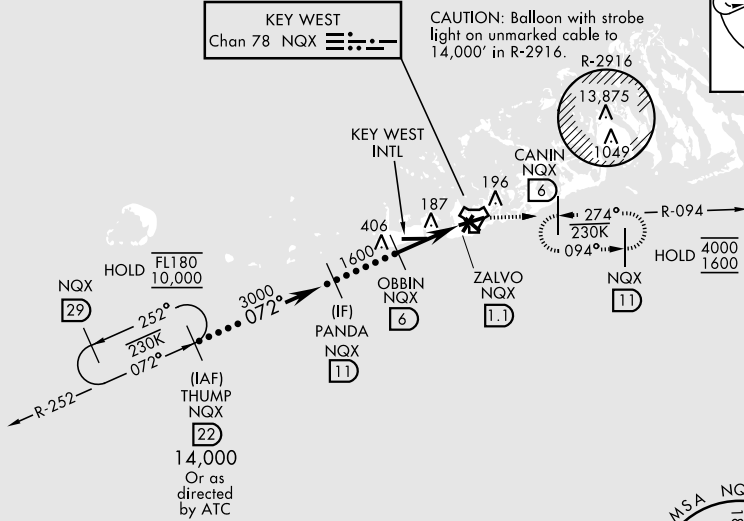


# HI-TACAN X RWY 8

TACAN NQX Chan <b>78</b>	APCH CRS <b>072°</b>	Rwy ldg <b>10,001</b> TDZE <b>4</b> Arprt Elev <b>6</b>	[USN]	KEY WEST NAS (BOCA CHICA FLD) (KNQX)
<b>▽</b> *When ALS inop, increase vis to 1¼ miles.			ALSF-1 	MISSED APPROACH: Climb to 1600 on NQX R-252 to NQX TACAN, then right turn to intercept R-094 to CANIN/6 DME and hold.
ATIS★ <b>307.025</b>	NAVY KEY WEST APP CON★ <b>124.025 313.7</b>	NAVY KEY WEST TOWER★ <b>118.575 340.25</b>	GND CON <b>121.7 336.45</b>	ASR/PAR

CAUTION: Short Intermediate Segment



EMERG SAFE ALT 100 NM 15,000

PANDA NQX 11 3000 072° OBBIN NQX 6 1600 2.97° TCH 44 4.9 NM	1600 NQX R-252 	NQX R-094 	CANIN NQX 6 	ELEV 6	TDZE 4
CATEGORY	C	D	E		
S-8*	440-¾	436	(500-¾)		
CIRCLING	500-1½ 494 (500-1½)	580-2	574 (600-2)		

HIRL all rwys

# HI-TACAN X RWY 8

SE-3, 14 MAY 2026 to 11 JUN 2026

SE-3, 14 MAY 2026 to 11 JUN 2026