


HI-TACAN Z RWY 32

TACAN NQX Chan 78	APCH CRS 335°	Rwy Idg TDZE Arprt Elev	7000 4 6
-----------------------------	-------------------------	-------------------------------	-------------------------------------

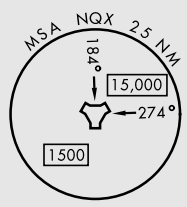
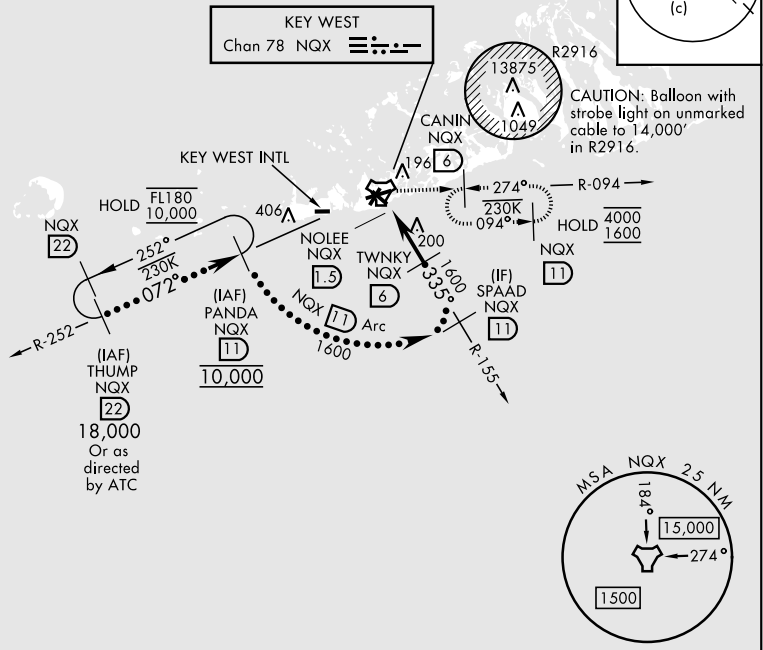
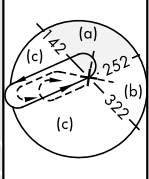
[USN] KEY WEST NAS (BOCA CHICA FLD) (KNQX)

RADAR required


MISSED APPROACH: Climb to 1600 then right turn to intercept NQX TACAN R-094 to CANIN/NQX 6 DME and hold.

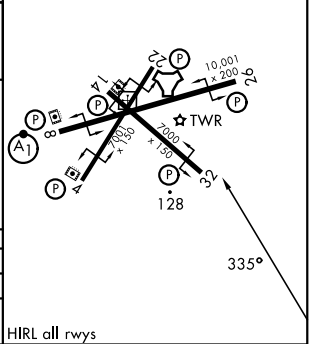
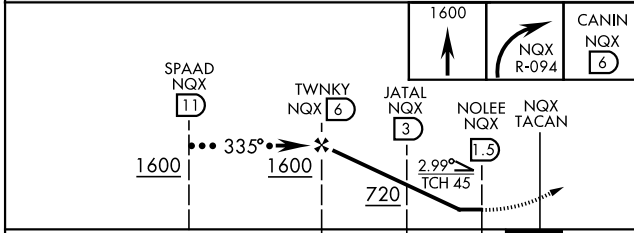
ATIS★ 307.025	NAVY KEY WEST APP CON★ 124.025 313.7	NAVY KEY WEST TOWER★ 118.575 340.25	GND CON 121.7 336.45	ASR/PAR
-------------------------	--	---	--------------------------------	---------

CAUTION: Short Intermediate Segment



EMERG SAFE ALT 100 NM 15,000

ELEV	6	TDZE	4
------	---	------	---



CATEGORY	C	D	E
S-32	380-1	376	(400-1)
CIRCLING	500-1½ 494 (500-1½)	580-2	574 (600-2)

HIRL all rwys

HI-TACAN Z RWY 32

SE-3, 14 MAY 2026 to 11 JUN 2026

SE-3, 14 MAY 2026 to 11 JUN 2026