

KEY WEST, FLORIDA

RNAV (GPS) RWY 4

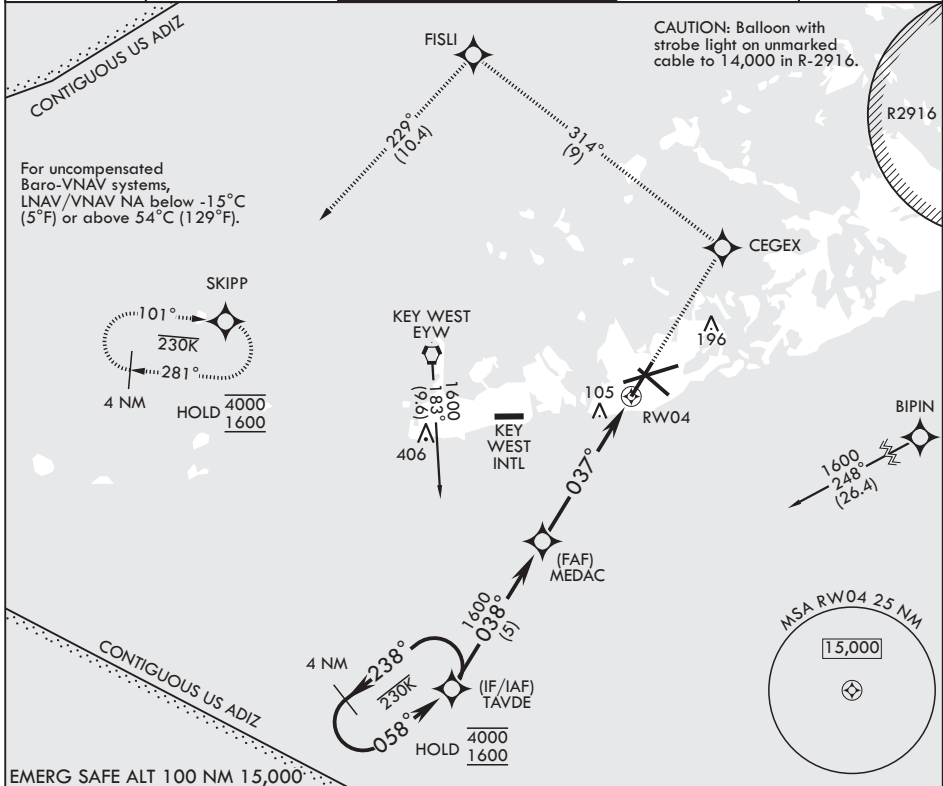
APCH CRS 037°	Rwy Idg TDZE Arprt Elev	7001 4 6
------------------	-------------------------------	----------------

(USN)

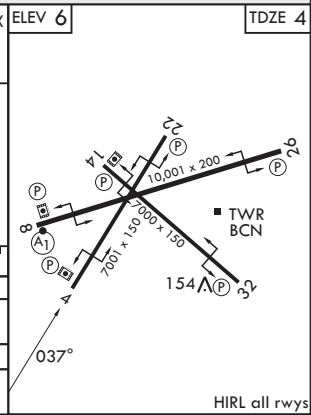
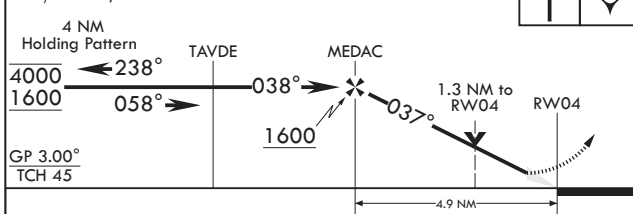
KEY WEST NAS (BOCA CHICA FLD) (KNQX)

RNP APCH-GPS MISSED APPROACH: (Do not exceed 230 KIAS until CEGEX.) Climb to 1600 direct CEGEX, track 314° to FISLI, track 229° to SKIPP and hold.

ATIS★ 307.025	APP CON★ 124.025 313.7	NAVY KEY WEST TOWER★ 118.575 340.25	GND CON 121.7 336.45	ASR/PAR
------------------	---------------------------	--	-------------------------	---------



VGSI and RNAV glidepath not coincident (VGSI Angle 3.00/TCH 35).



CATEGORY	A	B	C	D
LNAV/VNAV DA	254-3/4 250 (300-3/4)	255-3/4 251 (300-3/4)	266-7/8 262 (300-7/8)	
LNAV MDA	460-1 456 (500-1)	460-1 3/8 456 (500-1 3/8)	580-2 574 (600-2)	
CIRCLING	460-1 454 (500-1)	500-1 494 (500-1)	500-1 1/2 494 (500-1 1/2)	580-2 574 (600-2)

HIRL all rwys

KEY WEST, FLORIDA
Amdt 3 14MAY26

24°34'N - 81°41'W KEY WEST NAS (BOCA CHICA FLD) (KNQX)

RNAV (GPS) RWY 4

SE-3, 14 MAY 2026 to 11 JUN 2026

SE-3, 14 MAY 2026 to 11 JUN 2026