

KEY WEST, FLORIDA

RNAV (GPS) RWY 8

WAAS CH 65107 W08A	APCH CRS 079°	Rwy ldg TDZE Arpt Elev	10,001 4 6
--------------------------	------------------	------------------------------	------------------

(USN)

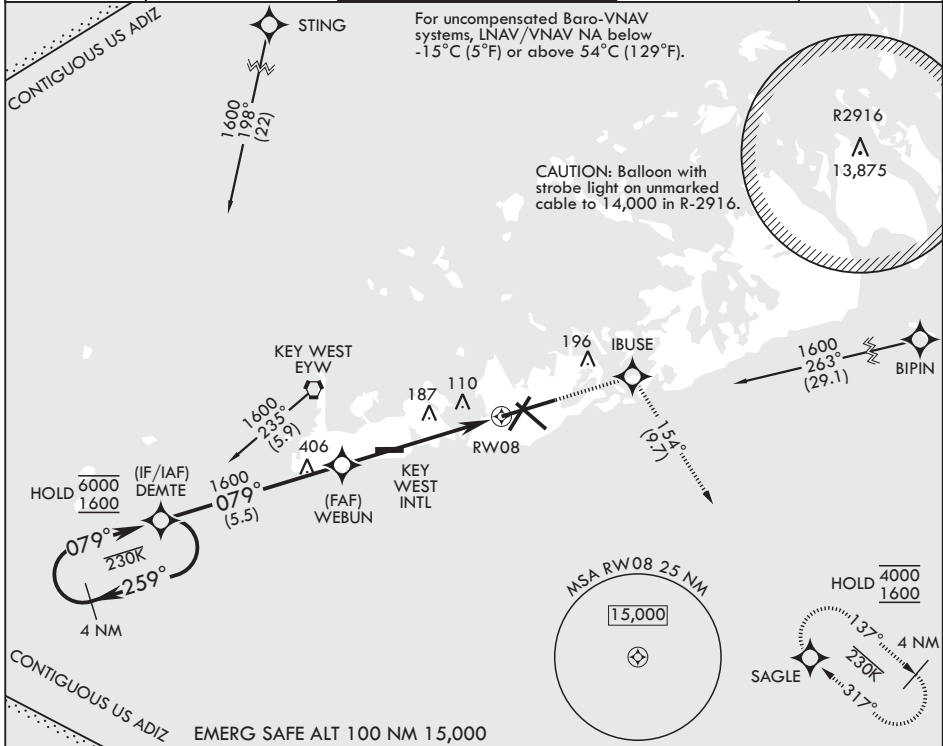
KEY WEST NAS (BOCA CHICA FLD) (KNQX)

RNP APCH-GPS

▼ * When ALS inop, increase vis to ¾ mile.
 ** When ALS inop, increase vis to 1 1/4 miles.
 *** When ALS inop, increase CAT AB vis to 1 mile, CAT CD vis to 1 1/4 miles.

ALSF-1 MISSED APPROACH: (Do not exceed 230 KIAS until IBUSE) Climb to 1600 direct IBUSE, track 154° to SAGLE and hold.

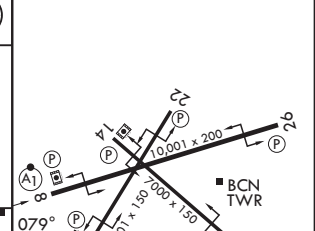
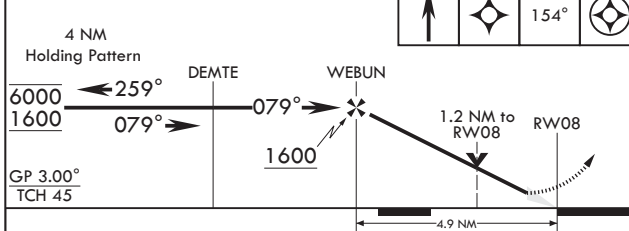
ATIS★ 307.025	APP CON★ 124.025 313.7	NAVY KEY WEST TOWER★ 118.575 340.25	GND CON 121.7 336.45	ASR/PAR
------------------	---------------------------	--	-------------------------	---------



SE-3, 14 MAY 2026 to 11 JUN 2026

SE-3, 14 MAY 2026 to 11 JUN 2026

1600	IBUSE	tr 154°	SAGLE	ELEV 6'	TDZE 4'
------	-------	---------	-------	---------	---------



CATEGORY	A	B	C	D
LPV DA*	204-½	200	(200-½)	
LNAV/VNAV DA**	425-¾	421	(500-¾)	
LNAV MDA***	440-½ 436 (500-½)	440-¾ 436 (500-¾)		
CIRCLING	460-1 454 (500-1)	500-1 494 (500-1)	500-1½ 494 (500-1½)	580-2 574 (600-2)

HIRL all rwys

KEY WEST, FLORIDA
Amdt 4 14MAY26

24°34'N - 81°41'W KEY WEST NAS (BOCA CHICA FLD) (KNQX)

RNAV (GPS) RWY 8