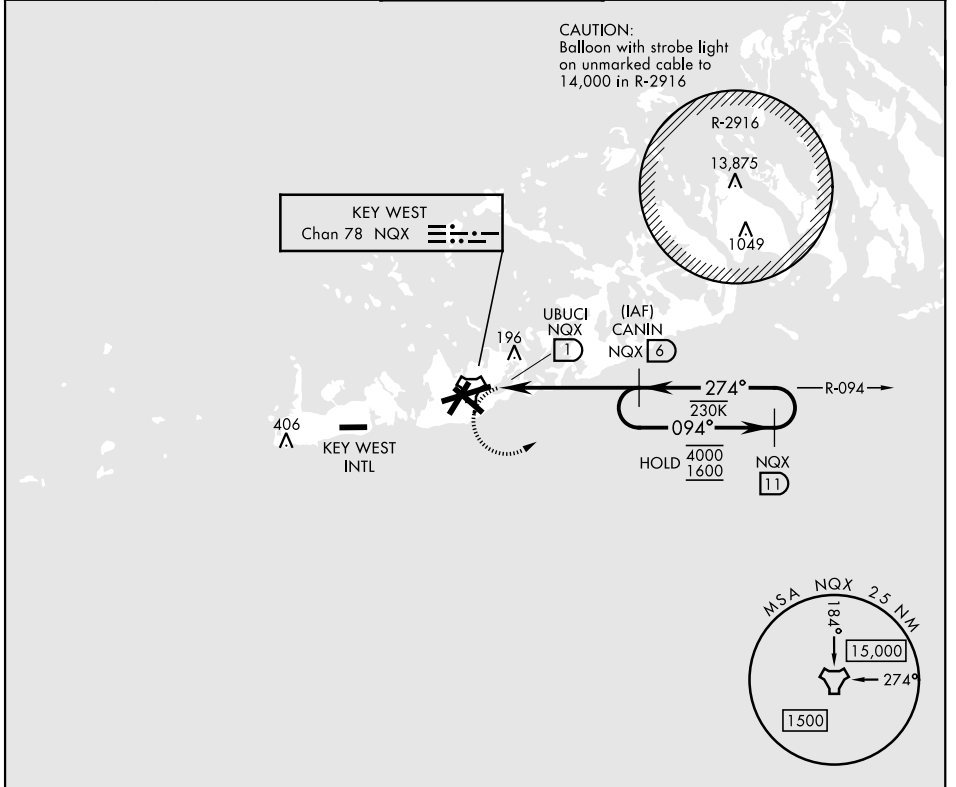


# TACAN RWY 26

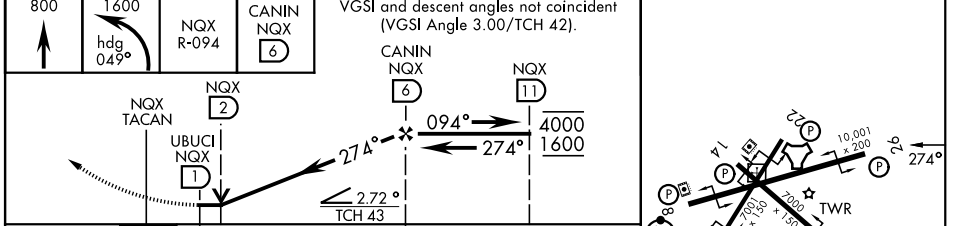
TACAN NQX Chan <b>78</b>	APCH CRS <b>274°</b>	Rwy Idg <b>10,001</b> TDZE <b>5</b> Arprt Elev <b>6</b>	[USN]	KEY WEST NAS (BOCA CHICA FLD) (KNQX)
-----------------------------	-------------------------	---	-------	--------------------------------------

RADAR required	MISSED APPROACH: Climb to 800 then climbing left turn to 1600 on hdg 049° to intercept NQX R-094 to CANIN/6 DME and hold.
----------------	---

ATIS★ <b>307.025</b>	NAVY KEY WEST APP CON★ <b>124.025 313.7</b>	NAVY KEY WEST TOWER★ <b>118.575 340.25</b>	GND CON <b>121.7 336.45</b>	ASR/PAR
-------------------------	--	---	--------------------------------	---------



EMEG SAFE ALT 100 NM 15,000	ELEV 6	TDZE 5
-----------------------------	--------	--------



CATEGORY	A	B	C	D
S-26	500-1	495 (500-1)	500-1 3/8	495 (500-1 3/8)
CIRCLING	500-1	494 (500-1)	500-1 1/2	580-2 574 (600-2)

HIRL all rwys

# TACAN RWY 26

SE-3, 14 MAY 2026 to 11 JUN 2026

SE-3, 14 MAY 2026 to 11 JUN 2026