

# VOR/DME RWY 26

EYW VORTAC <b>113.5</b> Chan <b>82</b>	APCH CRS <b>270°</b>	Rwy Idg <b>10,001</b> TDZE <b>5</b> Arprt Elev <b>6</b>
--	-------------------------	---

[USN]

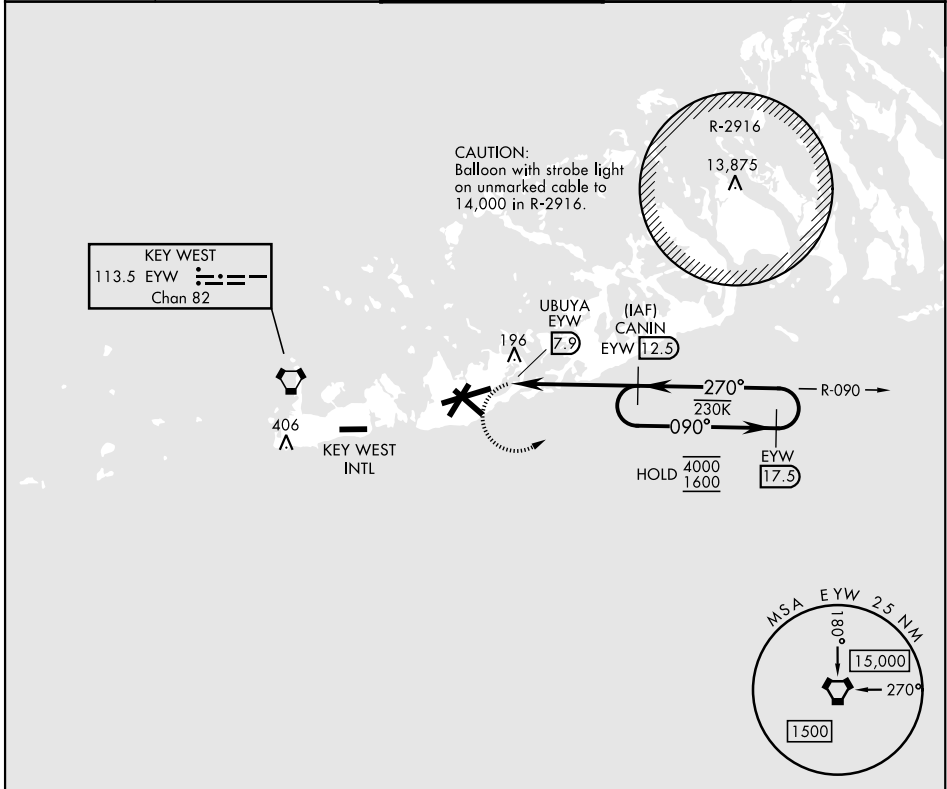
KEY WEST NAS (BOCA CHICA FLD) (KNQX)

RADAR required

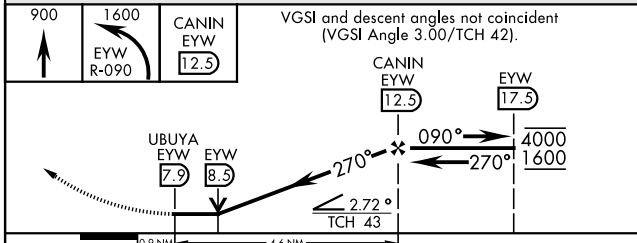
CAUTION: Final approach course crosses the extended runway centerline 5018' from threshold.

MISSED APPROACH: Climb to 900 then climbing left turn to 1600 to intercept EYW VORTAC R-090 to CANIN/12.5 DME and hold.

ATIS★ <b>307.025</b>	NAVY KEY WEST APP CON★ <b>124.025 313.7</b>	NAVY KEY WEST TOWER★ <b>118.575 340.25</b>	GND CON <b>121.7 336.45</b>	ASR/PAR
-------------------------	--	---	--------------------------------	---------

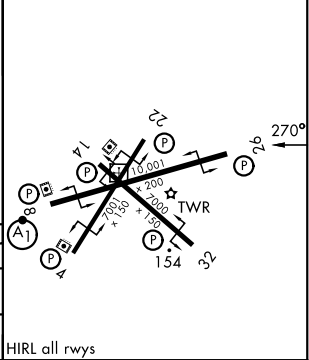


EMERG SAFE ALT 100 NM 15,000



ELEV	6	TDZE	5
------	---	------	---

CATEGORY	A		B		C		D	
S-26	520-1	515 (600-1)	520-1 1/8	515 (600-1 1/8)	520-1 1/2	515 (600-1 1/2)	580-2	574 (600-2)
CIRCLING	520-1	514 (600-1)	520-1 1/2	514 (600-1 1/2)	520-1 1/2	514 (600-1 1/2)	580-2	574 (600-2)



# VOR/DME RWY 26

SE-3, 14 MAY 2026 to 11 JUN 2026

SE-3, 14 MAY 2026 to 11 JUN 2026