

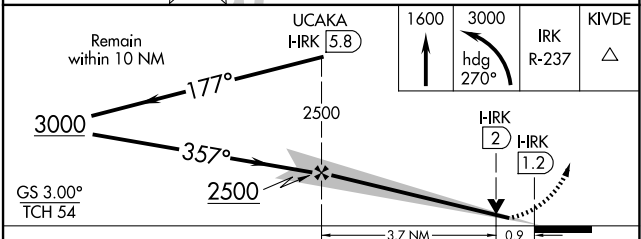
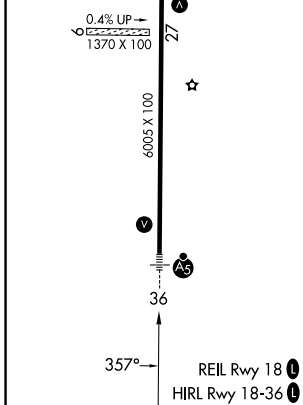
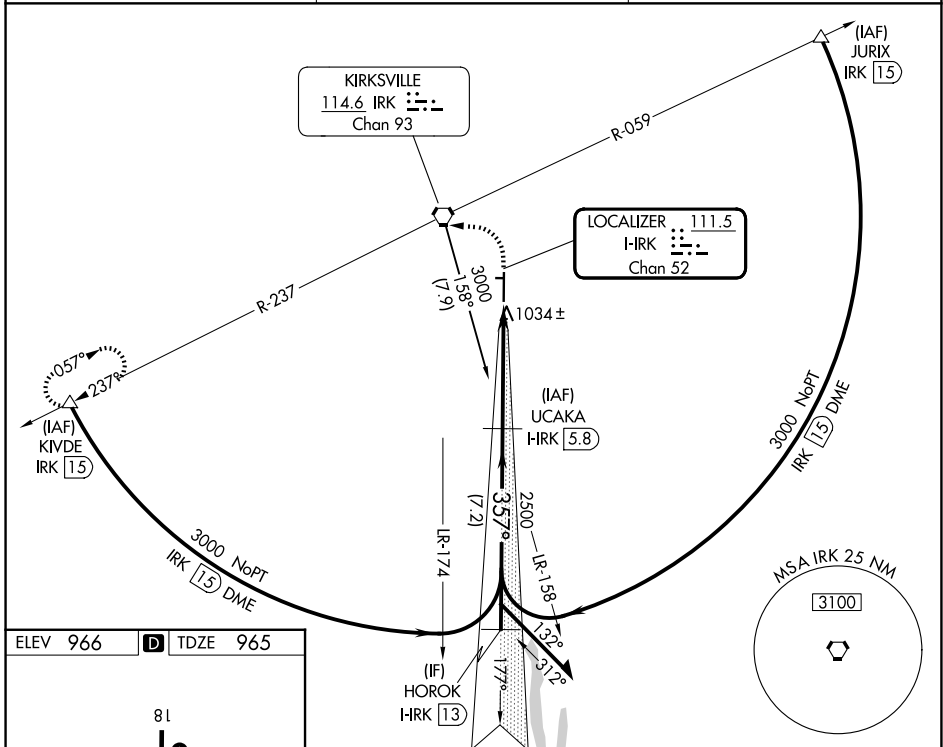
LOC/DME I-IRK <b>111.5</b> Chan 52	APP CRS <b>357°</b>	Rwy Ldg TDZE Apt Elev	<b>6005</b> <b>965</b> <b>966</b>
--	------------------------	-----------------------------	---

# ILS or LOC RWY 36

KIRKSVILLE RGNL (IRK)

DME required.	MALSR	MISSED APPROACH: Climb to 1600 then climbing left turn to 3000 on heading 270° and IRK VORTAC R-237 to KIVDE/IRK 1.5 DME and hold.
Circling NA to Rwys 9 and 27.		

ASOS <b>121.125</b>	KANSAS CITY CENTER <b>132.6 370.9</b>	UNICOM <b>122.8 (CTAF) 0</b>
------------------------	--	---------------------------------



CATEGORY	A	B	C	D
S-ILS 36		1165-1/2	200 (200-1/2)	
S-LOC 36		1300-1/2	335 (400-1/2)	
CIRCLING	1400-1	1440-1	1460-1 1/2	1540-2
	434 (500-1)	474 (500-1)	494 (500-1 1/2)	574 (600-2)

NC-3, 14 MAY 2026 to 11 JUN 2026

NC-3, 14 MAY 2026 to 11 JUN 2026