

APP CRS	Rwy Ldg	6005
177°	TDZE	966
	Apt Elev	966

RNAV (GPS) RWY 18

KIRKSVILLE RGNL (IRK)

RNP APCH.

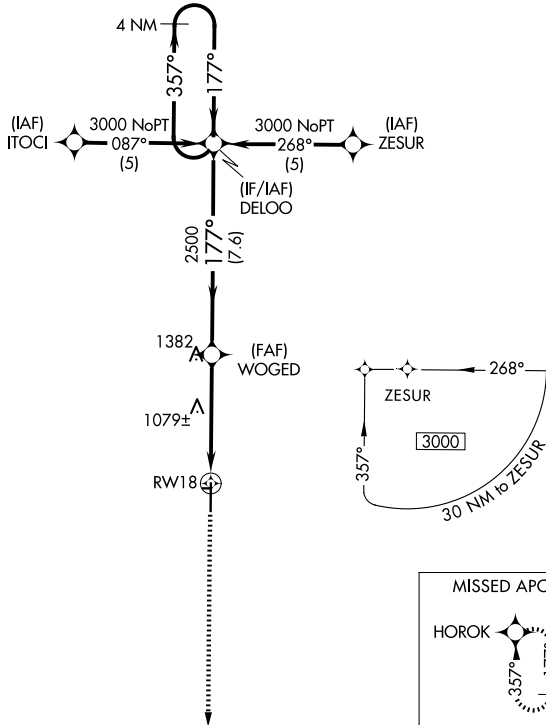
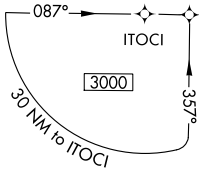
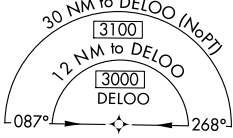
▼ Circling NA to Rwys 9 and 27.
Rwy 18 helicopter visibility reduction below 3/4 SM NA.

MISSED APPROACH: Climb to 3000 direct HOROK and hold.

ASOS
121.125

KANSAS CITY CENTER
132.6 370.9

UNICOM
122.8 (CTAF) 0



NC-3, 14 MAY 2026 to 11 JUN 2026

NC-3, 14 MAY 2026 to 11 JUN 2026

ELEV 966	D	TDZE 966
----------	----------	----------

MISSED APCH FIX



← 177°

81

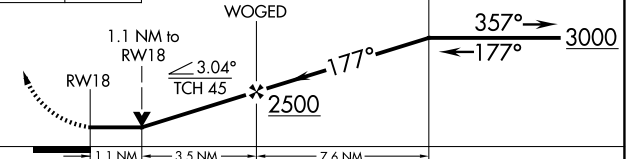
0.4% UP
1370 X 100

6000 X 100

36

REIL Rwy 18 **0**
HIRL Rwy 18-36 **0**

3000 HOROK VGSI and descent angles not coincident (VGSI Angle 3.00/TCH 33). 4 NM Holding Pattern



CATEGORY	A	B	C	D
LNAV MDA	1340-1 374 (400-1)			1340-1 1/4 374 (400-1 1/4)
CIRCLING	1400-1 434 (500-1)	1440-1 474 (500-1)	1460-1 1/2 494 (500-1 1/2)	1540-2 574 (600-2)