

KNOXVILLE, TENNESSEE

HI-ILS or LOC RWY 23L

LOC/DME I- OXH 110.75 Chan 44(Y)	APCH CRS 231°	Rwy ldg TDZE Arprt Elev 8600 965 986
---	-------------------------	--

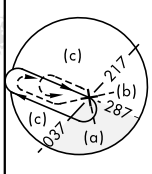
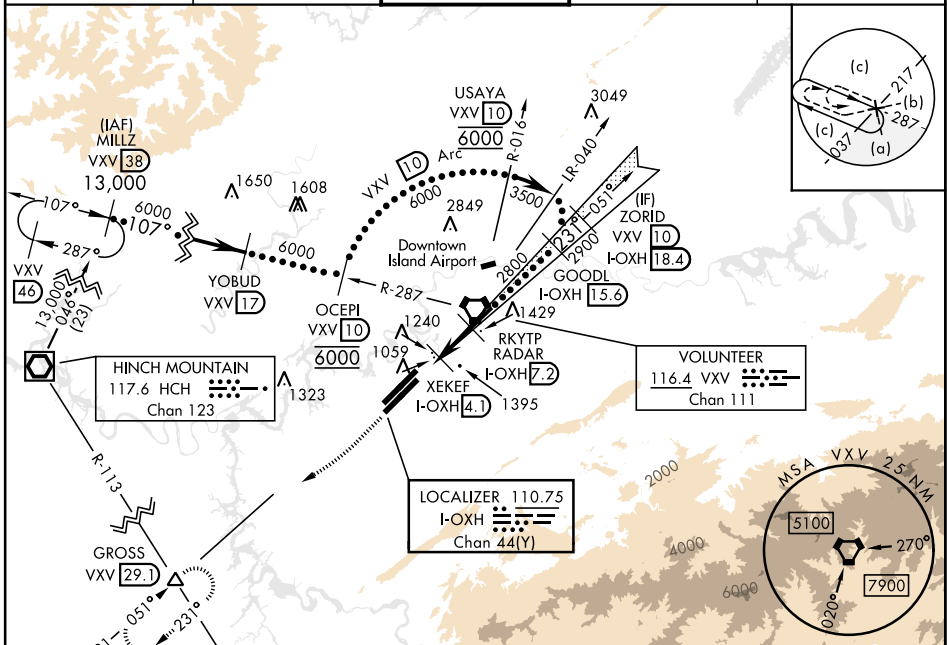
[USAF]

MC GHEE TYSON (KTYS)

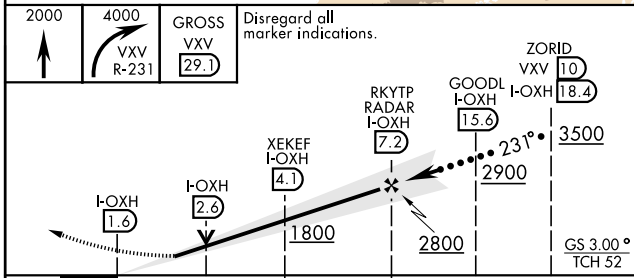
DME or RADAR required.

MISSED APPROACH: Climb to 2000, then climbing right turn to 4000 on heading 240° VXV R-231 direct GROSS Int/29.1 DME and hold.

ATIS 128.35	KNOXVILLE APP CON 123.9 360.8	KNOXVILLE TOWER 121.2 257.8	GND CON 121.9 348.6	CLNC DEL 121.65
-----------------------	---	---------------------------------------	-------------------------------	---------------------------

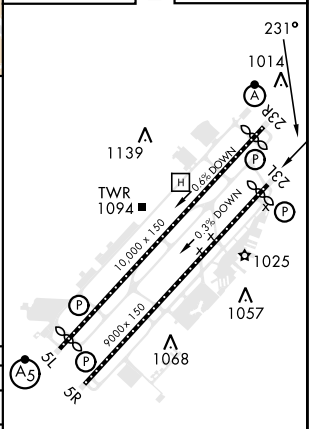


EMERG SAFE ALT 100 NM 8900



ELEV 986	TDZE 965
----------	----------

CATEGORY	C	D	E
S-ILS 23L	1165-40	200 (200-¾)	
S-LOC 23L	1320-55	355 (400-1¼)	
CIRCLING	1660-2 679 (700-2)	1900-3 919 (1000-3)	



HIRL Rwy 5R-23L, 5L-23R
 REIL Rwy 5R-23L
 TDZL/RCLS Rwy 5R, 23R

KNOXVILLE, TENNESSEE

35°49'N-84°00'W

MC GHEE TYSON (KTYS)

Orig-A 21JUL16

HI-ILS or LOC RWY 23L

SE-1, 14 MAY 2026 to 11 JUN 2026

SE-1, 14 MAY 2026 to 11 JUN 2026