

HI-ILS or LOC RWY 23R

LOC I-BUI 111.7	APCH CRS 231°	Rwy Idg TDZE Arprt Elev 9495 984 986
---------------------------	-------------------------	--

[USAF]

MC GHEE TYSON (KTYS)

DME required

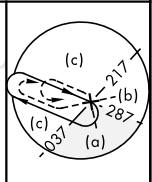


MISSED APPROACH: Climb to 2000 then dimbing right turn to 4000 on heading 240° and VXV VORTAC R-231 to GROSS/VXV 29.1 DME and hold.

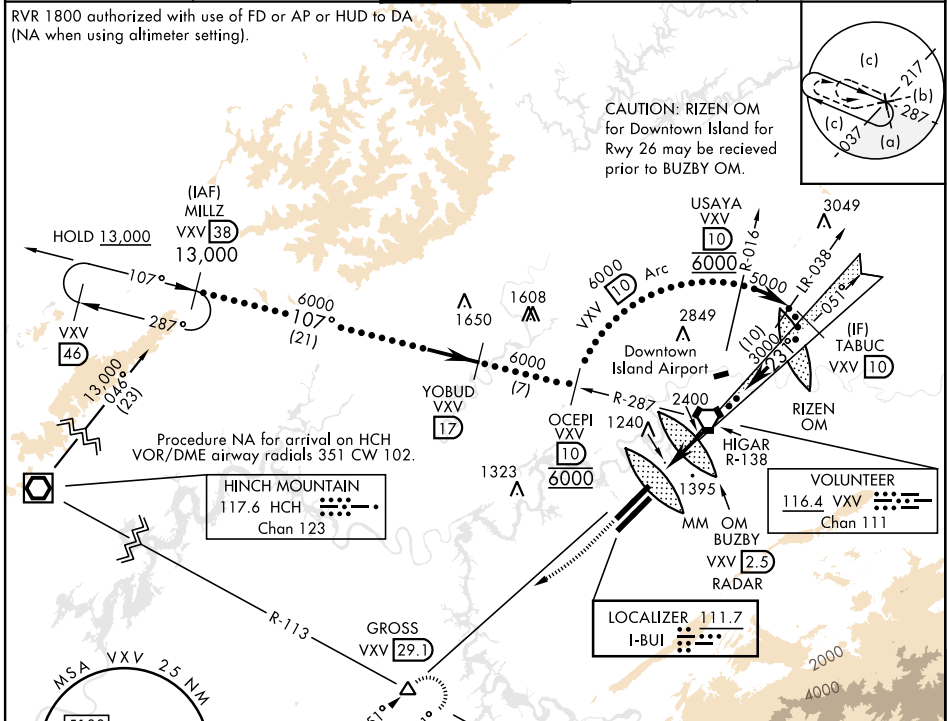
★ When ALS inop, increase CAT E RVR to 40, vis to ¾ mile.
★★ When ALS inop, increase vis to 1½ miles.

ATIS 128.35	KNOXVILLE APP CON 123.9 360.8	KNOXVILLE TOWER 121.2 257.8	GND CON 121.9 348.6	CLNC DEL 121.65
-----------------------	---	---------------------------------------	-------------------------------	---------------------------

RVR 1800 authorized with use of FD or AP or HUD to DA (NA when using altimeter setting).

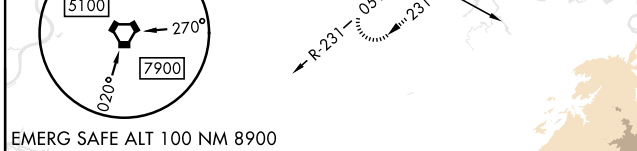


CAUTION: RIZEN OM for Downtown Island for Rwy 26 may be received prior to BUZBY OM.

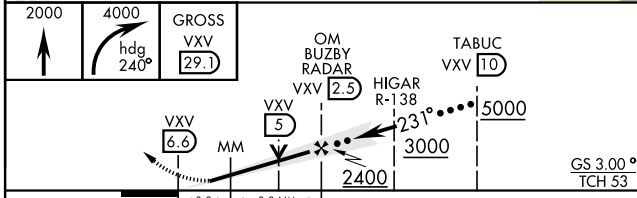


SE-1, 14 MAY 2026 to 11 JUN 2026

SE-1, 14 MAY 2026 to 11 JUN 2026

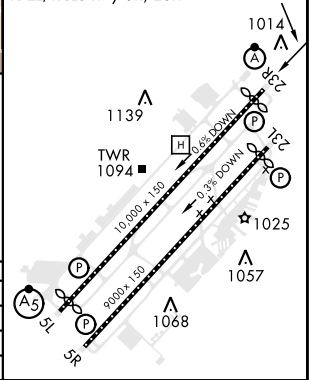


EMERG SAFE ALT 100 NM 8900



ELEV 986	TDZE 984
----------	----------

HIRL Rwy 5R-23L, 5L-23R
REIL Rwy 5R-23L
TDZL/RCLS Rwy 5R, 23R



CATEGORY	C	D	E
S-ILS 23R *	1184/1800	200	(200-½)
S-LOC 23R **	1560-1¼	576	(600-1¼)
CIRCLING	1660-2 674 (700-2)	1900-3	914 (1000-3)

HI-ILS or LOC RWY 23R