

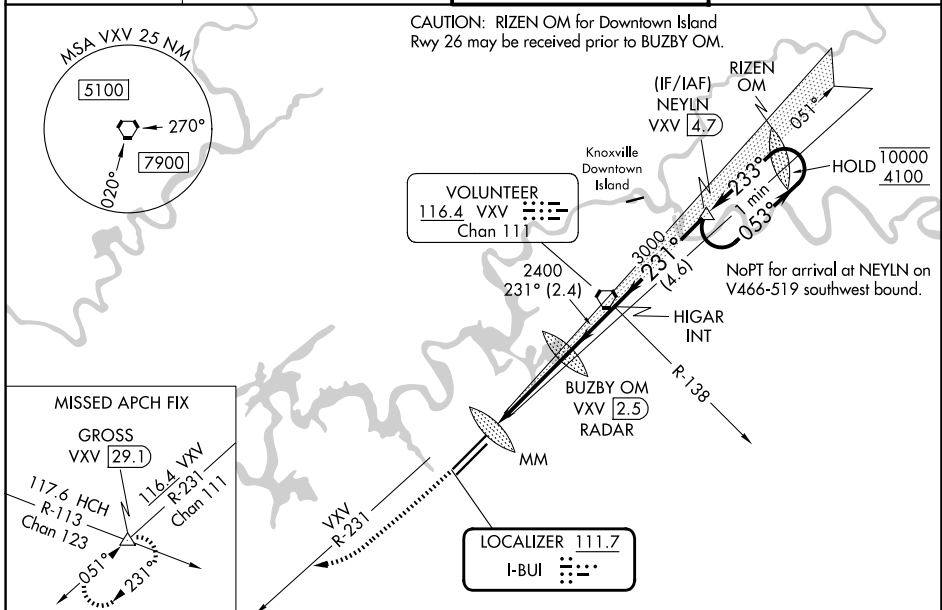
LOC I-BUI 111.7	APP CRS 231°	Rwy Ldg TDZE Apt Elev	9495 984 986
---------------------------	------------------------	-----------------------------	---

ILS or LOC RWY 23R

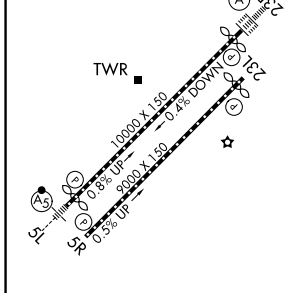
MC GHEE TYSON (T'YS)

DME or RADAR required.		ALSIF-2 	MISSED APPROACH: Climb to 2000 then climbing right turn to 4000 on heading 240° and VXV VORTAC R-231 to GROSS INT/VXV 29.1 DME and hold.
	For inop ALS, increase S-ILS 23R Cat E visibility to RVR 4000; increase S-LOC 23R Cat C/D/E visibility to 1/8 SM.		

ATIS 128.35	KNOXVILLE APP CON 123.9 360.8	KNOXVILLE TOWER 121.2 257.8	GND CON 121.9 348.6
-----------------------	---	---------------------------------------	-------------------------------



ELEV 986	D	TDZE 984
----------	----------	----------



HIRL Rwy 5L-23R and 5R-23L
REIL Rwy 5R and 23L
TDZL/RCLS Rwy 23R

FAF to MAP 4.2 NM

Knots	60	90	120	150	180
Min:Sec	4:12	2:48	2:06	1:41	1:24

2000	4000	VXV R-231	GROSS	One Minute Holding Pattern					
		hdg 240°		NEYLN VXV 4.7					
		BUZBY OM VXV 2.5 RADAR	HIGAR INT	053°	10000				
		VXV 5	2364	233°	4100	GS 3.00° TCH 53			
		VXV 6.6	2400	231°	3000				
		0.3	1.3	2.5 NM	2.4 NM	4.6 NM			
CATEGORY	A		B		C		D		E
S-ILS 23R			1184/18		200 (200-1/2)				
S-LOC 23R	1560/24		576 (600-1/2)		1560-1/4		576 (600-1/4)		
CIRCLING	1560-1		574 (600-1)		1660-2 674 (700-2)		1900-3 914 (1000-3)		

SE-1, 14 MAY 2026 to 11 JUN 2026

SE-1, 14 MAY 2026 to 11 JUN 2026