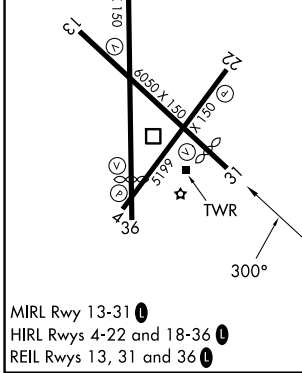
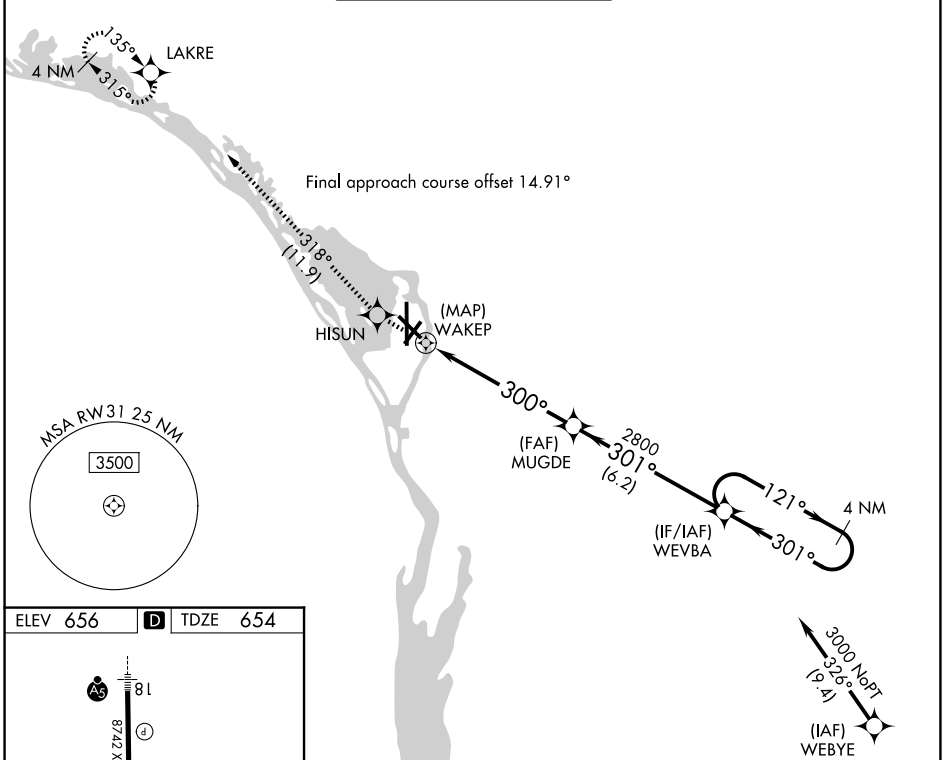


APP CRS	Rwy Ldg	<b>5310</b>
<b>300°</b>	TDZE	<b>654</b>
	Apt Elev	<b>656</b>

# RNAV (GPS) RWY 31

LA CROSSE RGNL (LSE)

RNP APCH.		<p><b>⚠</b> Circling Rwy 22 NA at night. Rwy 31 helicopter visibility reduction below 1 SM NA. When local altimeter setting not received, use Winona altimeter setting and increase all MDA 60 feet.</p> <p><b>⚠</b> -21°C</p>		<p>MISSED APPROACH: Climb to 3000 direct HISUN and on track 318° to LAKRE and hold.</p>	
ATIS	MINNEAPOLIS CENTER	LA CROSSE TOWER ★	GND CON	UNICOM	
<b>124.95</b>	<b>128.6 363.0</b>	<b>118.45 (CTAF) 251.075</b>	<b>121.8</b>	<b>122.95</b>	



3000	HISUN	tr 318°	LAKRE	WEVBA	4 NM Holding Pattern
↑	✧		✧		
WAKEP		MUGDE	Visual Segment - Obstacles.		
0.4	6.1 NM	6.2 NM			
WAKEP	300°	2800	301°	121°	3000
			← 301°		
CATEGORY	A	B	C	D	
LNAV MDA	1720-1¼ 1066 (1100-1¼)	1720-1½ 1066 (1100-1½)	1720-3	1066 (1100-3)	
CIRCLING	1720-1¼ 1064 (1100-1¼)	1720-1½ 1064 (1100-1½)	1760-3	1820-3 1164 (1200-3)	

EC-3, 14 MAY 2026 to 11 JUN 2026

EC-3, 14 MAY 2026 to 11 JUN 2026