

WAAS CH <b>93813</b> <b>W26A</b>	APP CRS <b>261°</b>	Rwy Idg <b>6849</b> TDZE <b>4188</b> Apt Elev <b>4229</b>
--	------------------------	---

# RNAV (GPS) RWY 26

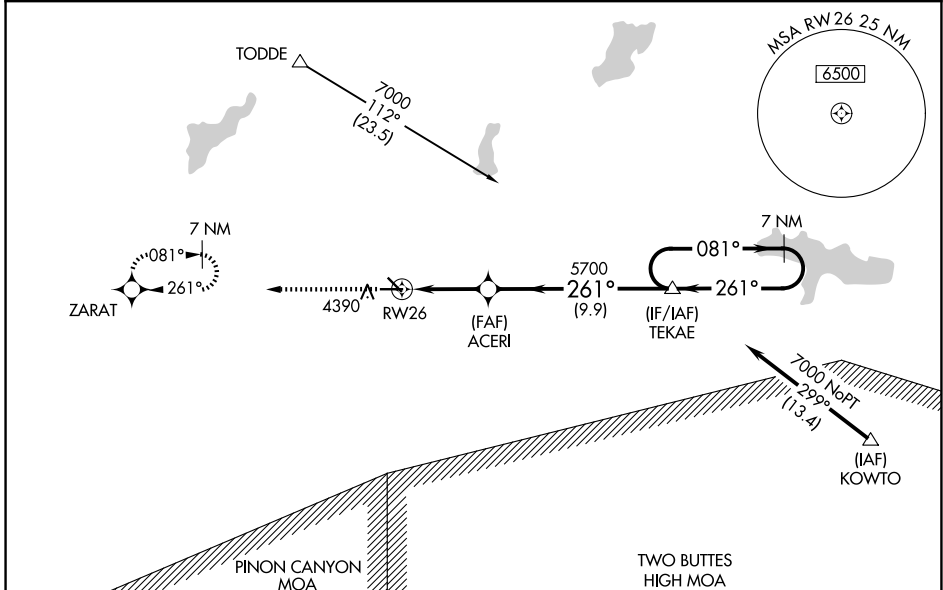
LA JUNTA MUNI (LHX)

RNP APCH - GPS.

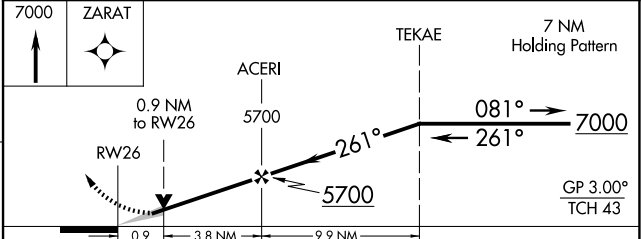
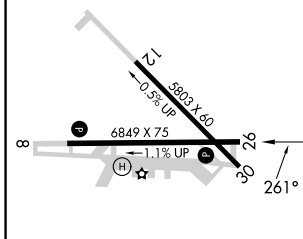
**⚠** For uncompensated Baro-VNAV systems, LNAV/VNAV NA below -23°C or above 40°C. Baro-VNAV and VDP NA when using Lamar altimeter setting. When local altimeter setting not received, use Lamar altimeter setting; increase LPV and LNAV/VNAV DAs to 4604 feet and all visibilities ¾ SM; increase all MDAs 180 feet and visibility LNAV Cats C and D ½ SM and Circling Cat C ½ SM and Cat D ¾ SM. Circling Rwy 12, 30 NA at night.

**MISSED APPROACH:**  
Climb to 7000 direct ZARAT and hold.

ASOS <b>135.525</b>	DENVER CENTER <b>128.375 379.95</b>	UNICOM <b>123.0 (CTAF) 0</b>
------------------------	--	---------------------------------



ELEV 4229	TDZE 4188
-----------	-----------



CATEGORY	A	B	C	D
LPV DA		4438-¾	250 (300-¾)	
LNAV/VNAV DA		4438-¾	250 (300-¾)	
LNAV MDA	4480-1	292 (300-1)	4480-⅞	292 (300-⅞)
CIRCLING	4740-1	511 (600-1)	4740-1½ 511 (600-1½)	4860-2 631 (700-2)

REIL Rws 8 and 26 **0**  
MIRL Rws 8-26 **0**

LA JUNTA, COLORADO  
Amdt 1B 06OCT22

38°03'N-103°31'W

# RNAV (GPS) RWY 26

LA JUNTA MUNI (LHX)

SW-1, 14 MAY 2026 to 11 JUN 2026

SW-1, 14 MAY 2026 to 11 JUN 2026