

TACAN RWY 24

LAKEHURST MAXFIELD FLD,

(JOINT BASE MC GUIRE DIX LAKEHURST) (KNEL)

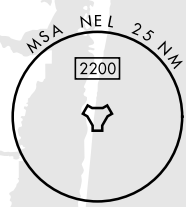
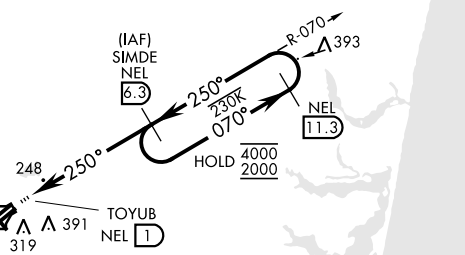
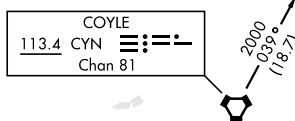
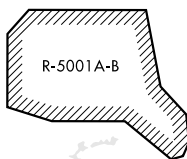
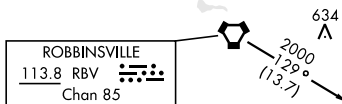
TACAN NEL Chan 55	APCH CRS 250°	Rwy ldg TDZE Arprt Elev 5002 101 101
-----------------------------	-------------------------	--

[USN]

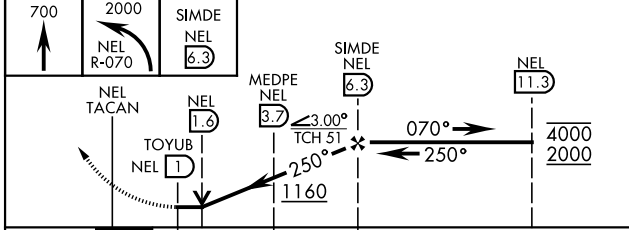


MISSED APPROACH: Climb to 700, then climbing left turn to 2000 to intercept NEL TACAN R-070 to SIMDE and hold, continue climb in hold to 2000.

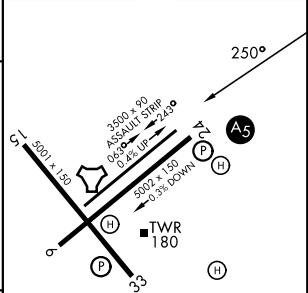
<p>▼ *When ALS inop increase CAT AB vis to 1 mile, CAT CD vis to 1½ miles.</p>	<p>ATIS ★ 276.525</p>	<p>MC GUIRE APP CON 126.475 363.8</p>	<p>TOWER ★ 127.775 0 360.2</p>	<p>GND CON 118.375 307.375</p>
--	----------------------------------	--	---	---



EMERG SAFE ALT 100 NM 4000



ELEV	101	TDZE	101
------	-----	------	-----



CATEGORY	A	B	C	D
S-24*	500-½ 399	(400-½)	500-¾ 399	(400-¾)
CIRCLING	660-1 559 (600-1)	720-1 619 (700-1)	720-1¾ 619 (700-1¾)	720-2 619 (700-2)

HIRL Rwy 6-24
MIRL Rwy 063°-243°

NE-2, 14 MAY 2026 to 11 JUN 2026

NE-2, 14 MAY 2026 to 11 JUN 2026