

LOC I-CPQ 111.7	APP CRS 096°	Rwy Ldg 8506
		TDZE 861
		Apt Elev 861

ILS or LOC RWY 10R

CAPITAL REGION INTL (LAN)

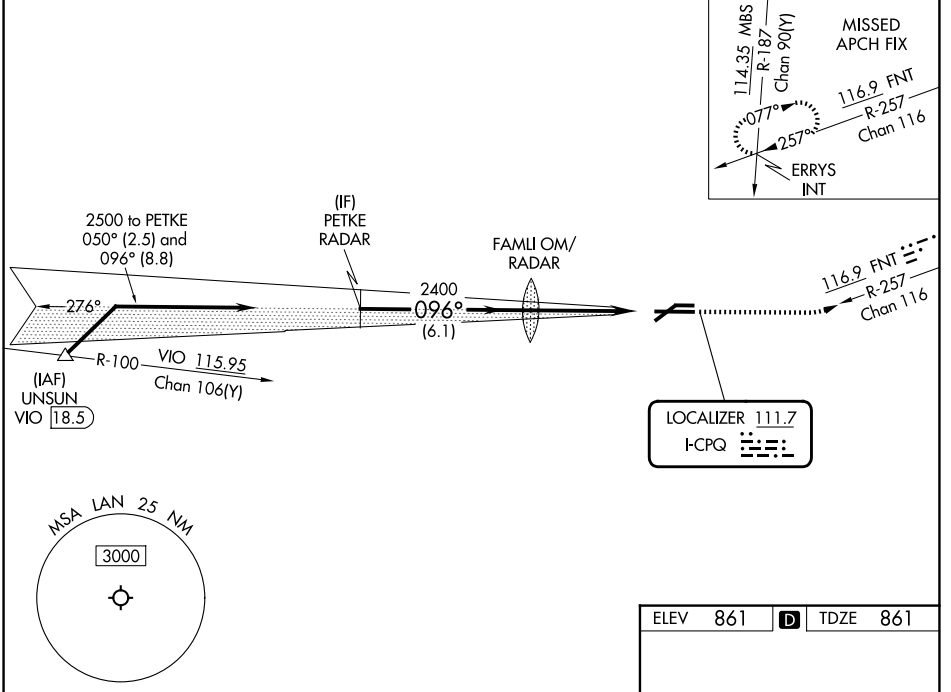
RADAR required.

▼ Rwy 10R helicopter visibility reduction below RVR 4000 NA.
 ▲ For inop ALS, increase S-ILS 10R all Cats to RVR 4500 and S-LOC 10R Cats A/B to RVR 5500 and Cats C/D to 1/2 SM.

MALSR

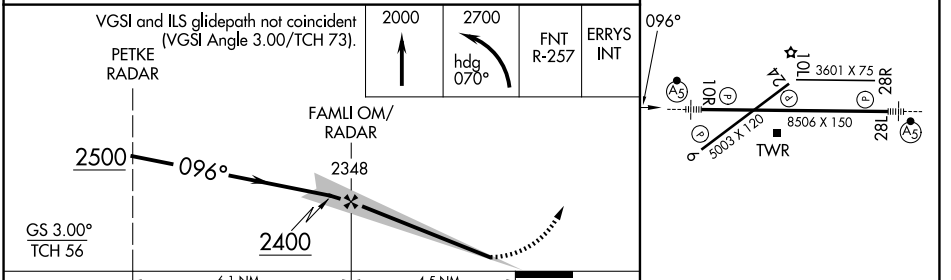
MISSED APPROACH: Climb to 2000 then climbing left turn to 2700 on heading 070° and on FNT VORTAC R-257 to ERRYS INT and hold.

ATIS 119.75	GREAT LAKES APP CON ★ 118.65 226.4	LANSING TOWER 119.9 240.9	GND CON 121.9
-----------------------	--	-------------------------------------	-------------------------



EC-1, 14 MAY 2026 to 11 JUN 2026

EC-1, 14 MAY 2026 to 11 JUN 2026



	ELEV 861	TDZE 861
	2000	2700
	↑	hdg 070°
		FNT R-257
		ERRYS INT
	REIL Rwy 6 and 24	
	HIRL Rwy 10R-28L	
	MIRL Rwy 6-24	
	FAF to MAP 4.5 NM	
	Knots	60 90 120 150 180
	Min:Sec	4:30 3:00 2:15 1:48 1:30