

WAAS CH 61314 W10A	APP CRS 096°	Rwy Ldg TDZE Apt Elev	8506 861 861
--	------------------------	-----------------------------	---

RNAV (GPS) RWY 10R

CAPITAL REGION INTL (L.A.N)

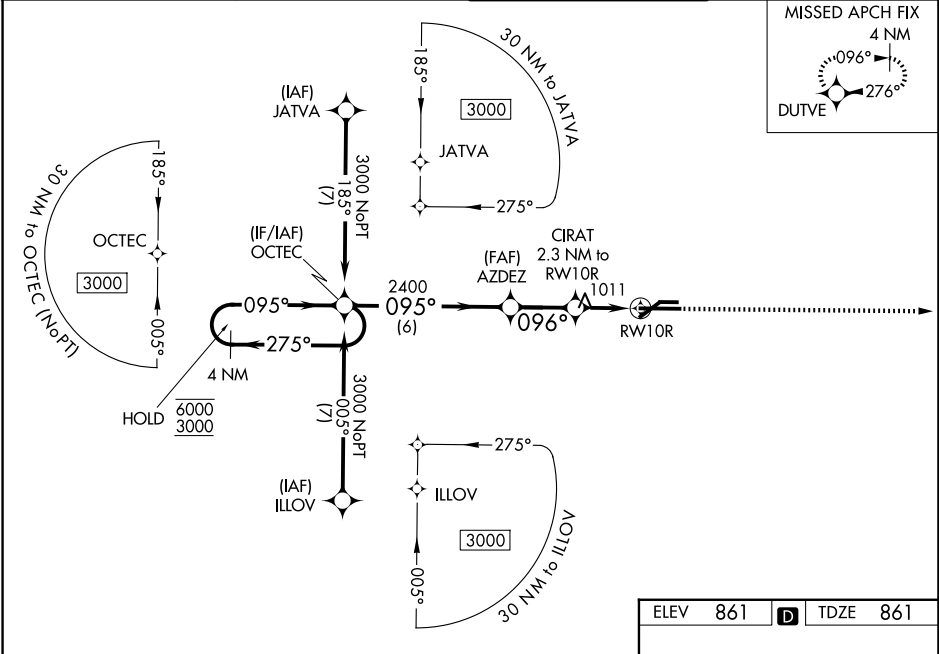
RNP APCH - GPS.

⚠ Circling Rwy 10L, 28R NA at night. For uncompensated Baro-VNAV systems, LNAV/VNAV NA below -19°C or above 54°C. Rwy 10R helicopter visibility reduction below RVR 4000 NA. For inop ALS, increase LPV all Cats visibility to RVR 4500, LNAV/VNAV all Cats visibility to RVR 6000, LNAV Cats A/B to RVR 5500 and Cats C/D to RVR 6000.

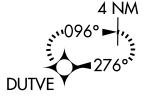


MISSED APPROACH:
Climb to 3000 direct DUTVE and hold.

ATIS 119.75	GREAT LAKES APP CON * 118.65 226.4	LANSING TOWER 119.9 240.9	GND CON 121.9
-----------------------	--	-------------------------------------	-------------------------

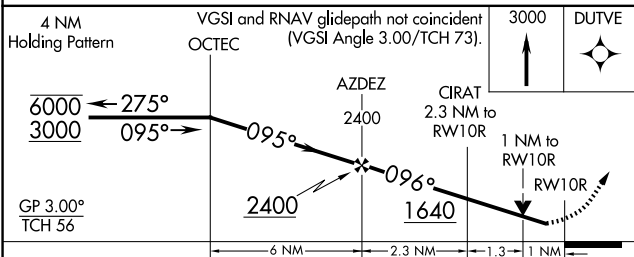


MISSED APCH FIX

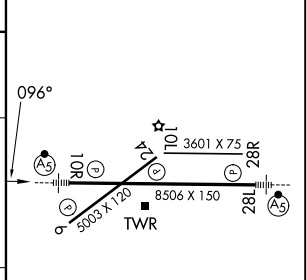


EC-1, 14 MAY 2026 to 11 JUN 2026

EC-1, 14 MAY 2026 to 11 JUN 2026



ELEV	861	D	TDZE	861
------	-----	---	------	-----



CATEGORY	A	B	C	D
LPV DA		1153/40	292 (300-¾)	
LNAV/VNAV DA		1245/40	384 (400-¾)	
LNAV MDA		1280/40	419 (500-¾)	
CIRCLING	1320-1 459 (500-1)	1340-1 479 (500-1)	1600-2 739 (800-2)	1760-3 899 (900-3)

MIRL Rwy 6-24
HIRL Rwy 10R-28L
REIL Rwy 6 and 24