

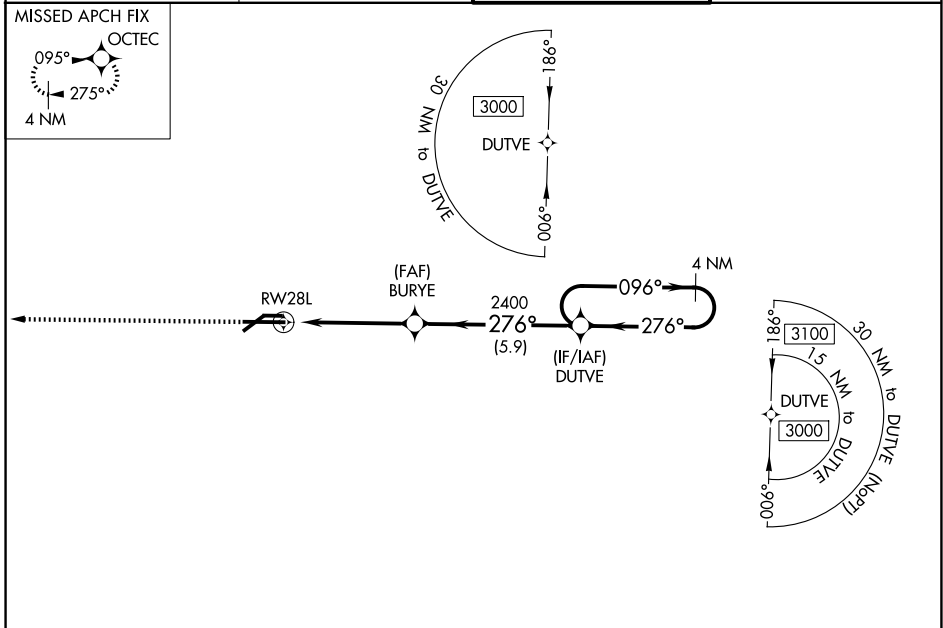
WAAS CH 40414 W28A	APP CRS 276°	Rwy Ldg TDZE Apt Elev	8506 852 861
----------------------------------------	------------------------	-----------------------------	-----------------------------------------

RNAV (GPS) RWY 28L

CAPITAL REGION INTL (L.A.N)

<p>For uncompensated Baro-VNAV systems, LNAV/VNAV NA below -19°C (-2°F) or above 54°C (130°F). DME/DME RNP-0.3 NA. Circling Rwy 10L, 28R NA at night. # RVR 1800 authorized with use of FD or AP or HUD to DA.</p>	<p>MALS</p>	<p>MISSED APPROACH: Climb to 3000 direct OCTEC and hold.</p>

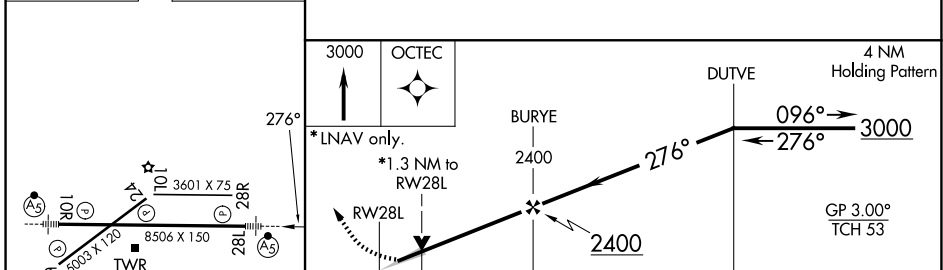
ATIS 119.75	GREAT LAKES APP CON * 118.65 226.4	LANSING TOWER 119.9 240.9	GND CON 121.9
-----------------------	----------------------------------------------	-------------------------------------	-------------------------



EC-1, 14 MAY 2026 to 11 JUN 2026

EC-1, 14 MAY 2026 to 11 JUN 2026

ELEV 861	D	TDZE 852
----------	----------	----------



3000	OCTEC	4 NM Holding Pattern		
* LNAV only.				
* 1.3 NM to RWY 28L				
1.3	3.4 NM	5.9 NM		
CATEGORY	A	B	C	D
LPV DA #	1052/24		200 (200-½)	
LNAV/VNAV DA	1174/28		322 (400-⅝)	
LNAV MDA	1300/24	448 (500-½)	1300/45	448 (500-⅞)
CIRCLING	1380-1	519 (600-1)	1600-2 739 (800-2)	1760-3 899 (900-3)

REIL Rwy 6 and 24
HIRL Rwy 10R-28L
MIRL Rwy 6-24

RNAV (GPS) RWY 28L