

WAAS CH <b>82118</b> <b>W06A</b>	APP CRS <b>058°</b>	Rwy Ldg TDZE Apt Elev	<b>5002</b> <b>859</b> <b>861</b>
--	------------------------	-----------------------------	---

# RNAV (GPS) RWY 6

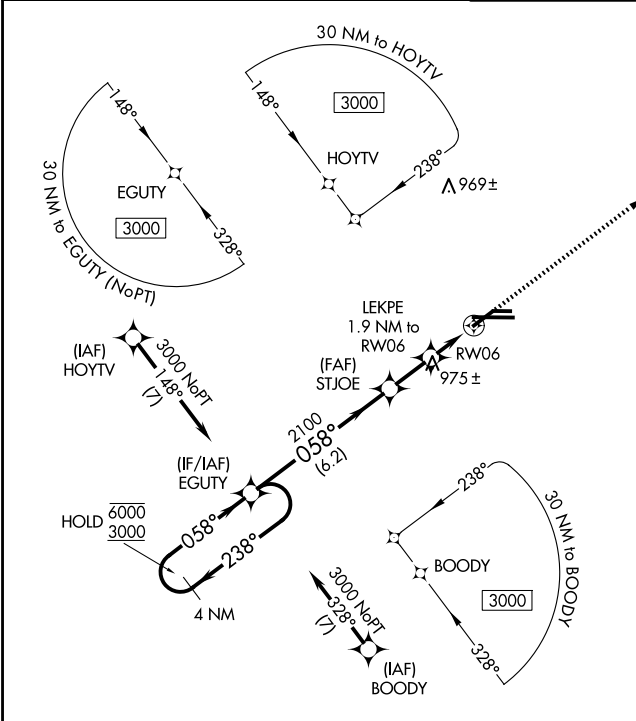
CAPITAL REGION INTL (LAN)

RNP APCH.

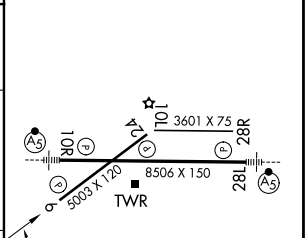
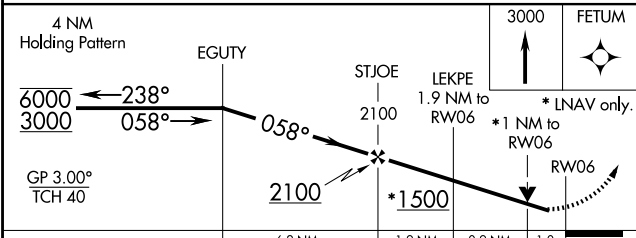
**⚠** Circling Rwy 10L, 28R NA at night. Rwy 6 helicopter visibility reduction below 3/4 SM NA.  
**⚠** For uncompensated Baro-VNAV systems, LNAV/VNAV NA below -21°C or above 54°C.

**MISSED APPROACH:**  
Climb to 3000 direct  
FETUM and hold.

ATIS <b>119.75</b>	GREAT LAKES APP CON * <b>118.65 226.4</b>	LANSING TOWER <b>119.9 240.9</b>	GND CON <b>121.9</b>
-----------------------	--	-------------------------------------	-------------------------



ELEV	861	<b>D</b>	TDZE	859
------	-----	----------	------	-----



CATEGORY	A	B	C	D
LPV DA		1109-3/4	250 (300-3/4)	
LNAV/VNAV DA		1260-1 1/8	401 (400-1 1/8)	
LNAV MDA		1220-1	361 (400-1)	
CIRCLING	1320-1 459 (500-1)	1380-1 519 (600-1)	1600-2 739 (800-2)	1760-3 899 (900-3)

MIRL Rwy 6-24  
HIRL Rwy 10R-28L  
REL Rwy 6 and 24

EC-1, 14 MAY 2026 to 11 JUN 2026

EC-1, 14 MAY 2026 to 11 JUN 2026