

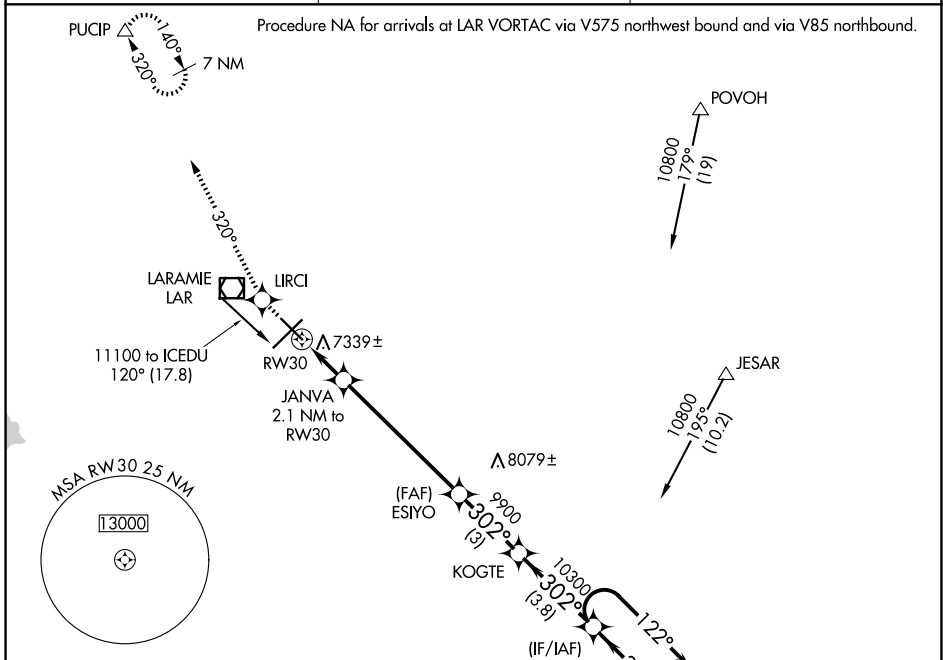
WAAS CH <b>53600</b> <b>W30A</b>	APP CRS <b>302°</b>	Rwy Ldg TDZE Apt Elev	<b>6301</b> <b>7278</b> <b>7284</b>
--	------------------------	-----------------------------	---

# RNAV (GPS) RWY 30

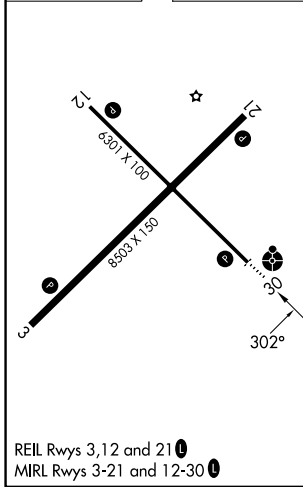
LARAMIE RGNL (L.A.R.)

<p><b>▽</b> Inop table does not apply. DME/DME RNP-0.3 NA. For uncompensated Baro-VNAV systems, LNAV/VNAV NA below -29°C (-20°F) or above 35°C (95°F).</p>	<p>ODALS</p>	<p>MISSED APPROACH: Climb to 9400 direct LIRCI and via 320° track to PUCIP and hold.</p>
--	--------------	--

<p>ASOS <b>135.475</b></p>	<p>DENVER CENTER <b>125.9 284.7</b></p>	<p>UNICOM <b>123.05</b> (CTAF) <b>0</b></p>
--------------------------------	---	---



ELEV 7284	<b>D</b>	TDZE 7278
-----------	----------	-----------



9400	LIRCI	tr 320°	PUCIP	ICEDU	7 NM Holding Pattern
*LNAV only		JANVA 2.1 NM to RW30	ESIYO	KOGTE	10800
*0.9 NM to RW30					GP 3.00° TCH 41
		7980	9900	10300	
		0.9	1.2 NM	5.8 NM	3 NM
				3.8 NM	
CATEGORY	A	B	C	D	
LPV DA	7528-1		250 (300-1)		
LNAV/VNAV DA	7629-1½		351 (400-1½)		
LNAV MDA	7600-1		322 (400-1)		
CIRCLING	7660-1¼ 376 (400-1¼)	7760-1¼ 476 (500-1¼)	7880-1½ 596 (600-1½)	7920-2 636 (700-2)	

NW-1, 14 MAY 2026 to 11 JUN 2026

NW-1, 14 MAY 2026 to 11 JUN 2026