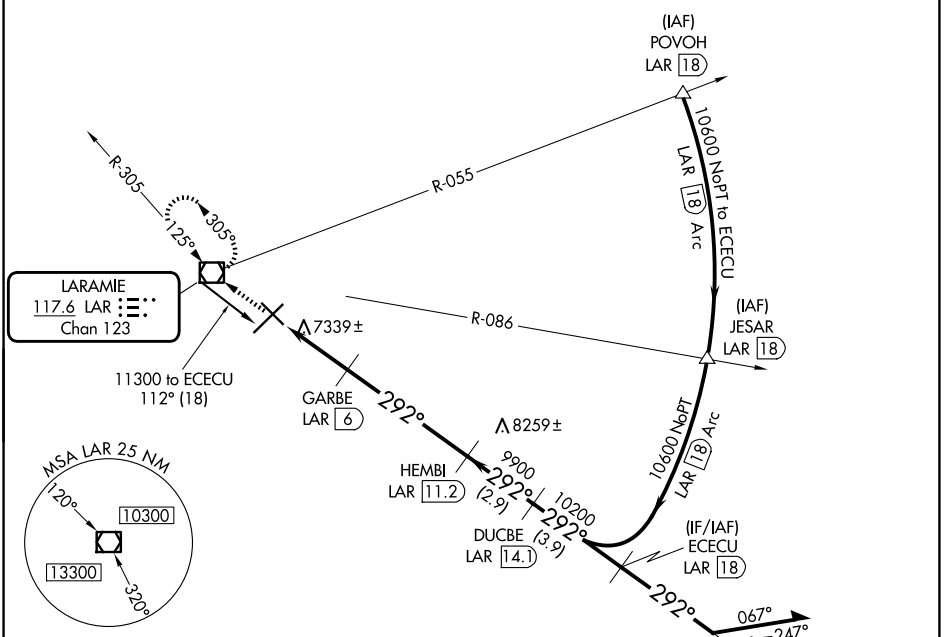


VOR/DME LAR <b>117.6</b> Chan 123	APP CRS <b>292°</b>	Rwy Ldg TDZE <b>6301</b> <b>7278</b> Apt Elev <b>7284</b>
---	------------------------	---

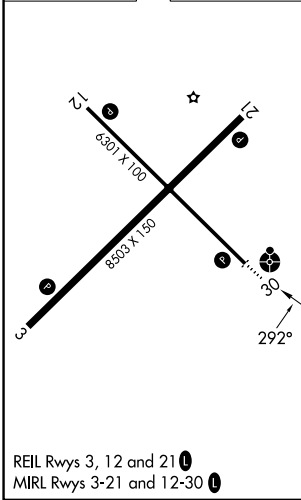
# VOR/DME RWY 30

LARAMIE RGNL (L.A.R.)

MISSED APPROACH: Climb to 9600 direct LAR VOR/DME and hold, continue climb-in-hold to 9600.		
ASOS <b>135.475</b>	DENVER CENTER <b>125.9 284.7</b>	UNICOM <b>123.05 (CTAF)</b>



ELEV 7284	<b>D</b>	TDZE 7278
-----------	----------	-----------



9600	LAR	ECECU LAR 18	Remain within 10 NM	
GARBE LAR 6 HEMBI LAR 11.2 DUCBE LAR 14.1 ECECU LAR 18	LAR 4 LAR 3.1	10600 10200 9900 8220	112° 292° 292° 10600	
0.9	2 NM	5.2 NM	2.9 NM	3.9 NM
CATEGORY	A	B	C	D
S-30	7600-¾ 322 (400-¾)			7600-1 322 (400-1)
CIRCLING	7660-1 376 (400-1)	7760-1 476 (500-1)	7880-1½ 596 (600-1½)	7920-2 636 (700-2)

NW-1, 14 MAY 2026 to 11 JUN 2026

NW-1, 14 MAY 2026 to 11 JUN 2026