

WAAS CH <b>65841</b> <b>W14A</b>	APP CRS <b>142°</b>	Rwy Ldg TDZE Apt Elev	<b>5927</b> <b>508</b> <b>508</b>
--	------------------------	-----------------------------	---

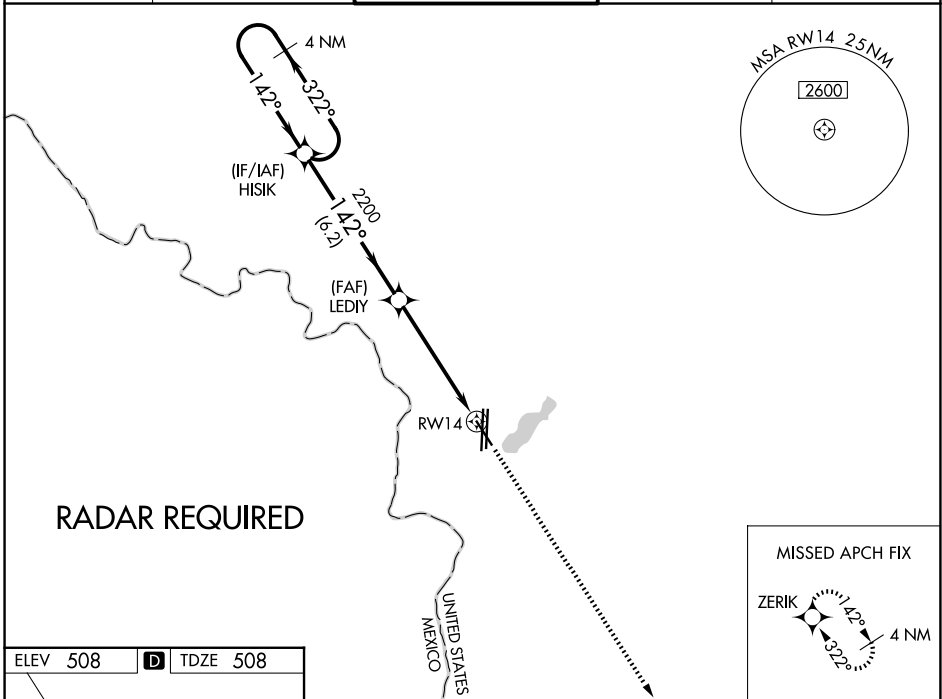
# RNAV (GPS) RWY 14

LAREDO INTL (L.R.D)

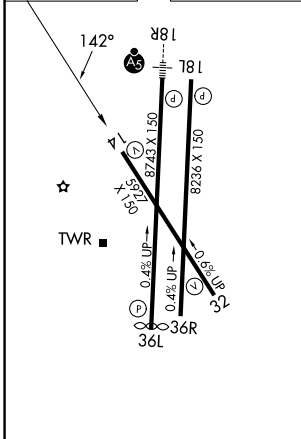
**⚠** For uncompensated Baro-VNAV systems, LNAV/VNAV NA below 1°C (34°F) or above 54°C (130°F). Circling NA west of Rwy 14 and 36L.  
**⚠** DME/DME RNP-0.3 NA.

MISSED APPROACH: Climb to 2500 direct ZERIK and hold.

ATIS <b>125.775</b>	HOUSTON CENTER <b>127.8 307.2</b>	LAREDO TOWER * <b>120.1(CTAF) 257.9</b>	GND CON <b>121.8</b>	UNICOM <b>122.95</b>
------------------------	--------------------------------------	--	-------------------------	-------------------------



ELEV 508	<b>D</b>	TDZE 508
----------	----------	----------



4 NM Holding Pattern	HISIK	LEDIY	ZERIK
3000	2200	2200	2500
GP 3.00° TCH 55			*LNAV only.
	6.2 NM	3.9 NM	1.3 NM

CATEGORY	A	B	C	D	E
LPV DA		758- <sup>3</sup> / <sub>4</sub>	250 (300- <sup>3</sup> / <sub>4</sub> )		
LNAV/VNAV DA		810- <sup>7</sup> / <sub>8</sub>	302 (400- <sup>7</sup> / <sub>8</sub> )		
LNAV MDA	960-1	452 (500-1)	960-1 <sup>3</sup> / <sub>8</sub>	452 (500-1 <sup>3</sup> / <sub>8</sub> )	
CIRCLING	960-1 452 (500-1)	980-1 472 (500-1)	1100-1 <sup>1</sup> / <sub>2</sub> 592 (600-1 <sup>1</sup> / <sub>2</sub> )	1200-2 <sup>1</sup> / <sub>4</sub> 692 (700-2 <sup>1</sup> / <sub>4</sub> )	1200-2 <sup>1</sup> / <sub>2</sub> 692 (700-2 <sup>1</sup> / <sub>2</sub> )

LAREDO, TEXAS  
 Amdt 1 01FEB18

27°33'N-99°28'W

# RNAV (GPS) RWY 14

SC-3, 14 MAY 2026 to 11 JUN 2026

SC-3, 14 MAY 2026 to 11 JUN 2026