

WAAS CH 77933 W36A	APP CRS 358°	Rwy Ldg 8623 TDZE 497 Apt Elev 508
--	------------------------	---

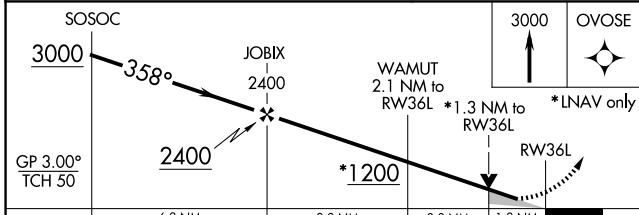
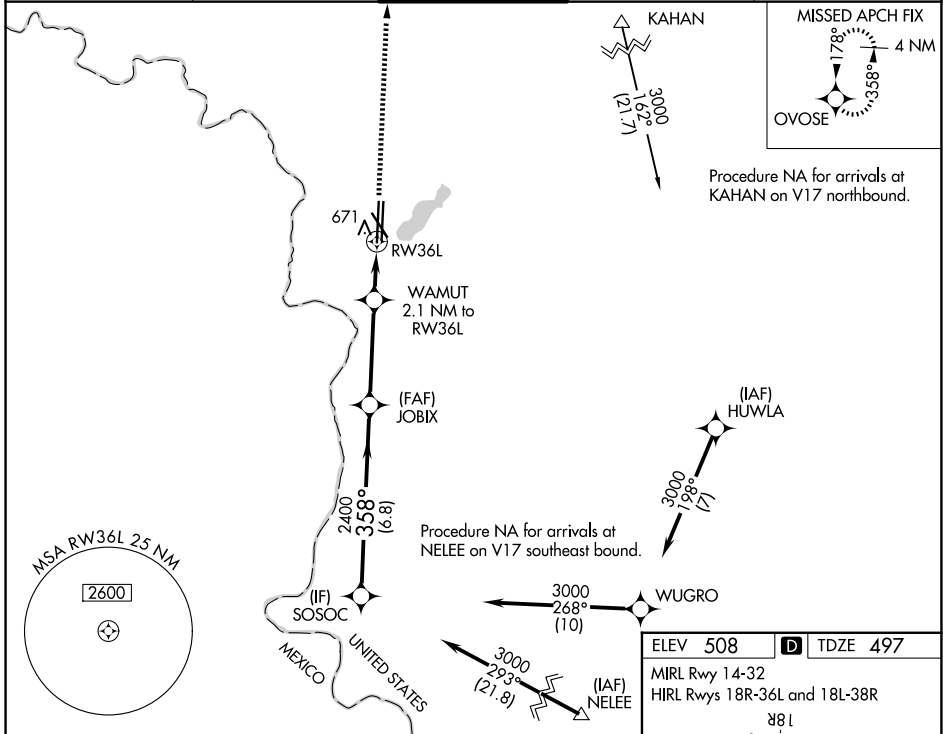
RNAV (GPS) RWY 36L

LAREDO INTL (L.R.D)

▽ For uncompensated Baro-VNAV systems, LNAV/VNAV NA below 1°C (34°F) or above 54°C (130°F). Circling NA west of Rwy 14 and 36L. DME/DME RNP-0.3 NA.

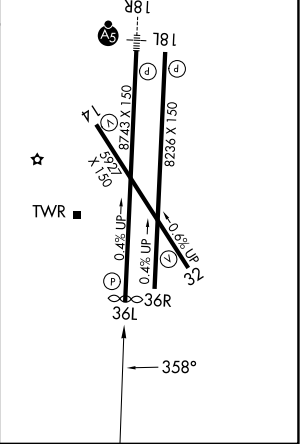
▲ MISSED APPROACH: Climb to 3000 direct OVOSE and hold.

ATIS 125.775	HOUSTON CENTER 127.8 307.2	LAREDO TOWER ★ 120.1(CTAF) 0 257.9	GND CON 121.8	UNICOM 122.95
------------------------	--------------------------------------	--	-------------------------	-------------------------



ELEV 508	D TDZE 497
----------	-------------------

MIRL Rwy 14-32
HIRL Rwy 18R-36L and 18L-38R



CATEGORY	A	B	C	D	E
LPV DA	697- ³ / ₄		200 (200- ³ / ₄)		
LNAV/VNAV DA	844-1		347 (400-1)		
LNAV MDA	940-1 443 (500-1)		940-1 ³ / ₈ 443 (500-1 ³ / ₈)		
CIRCLING	940-1 432 (500-1)	980-1 472 (500-1)	1100-1 ¹ / ₂ 592 (600-1 ¹ / ₂)	1200-2 ¹ / ₄ 692 (700-2 ¹ / ₄)	1200-2 ¹ / ₂ 692 (700-2 ¹ / ₂)

SC-3, 14 MAY 2026 to 11 JUN 2026

SC-3, 14 MAY 2026 to 11 JUN 2026