

VORTAC LRD 117.4 Chan 121	APP CRS 320°	Rwy Ldg TDZE Apt Elev	5927 494 508
--	------------------------	-----------------------------	---

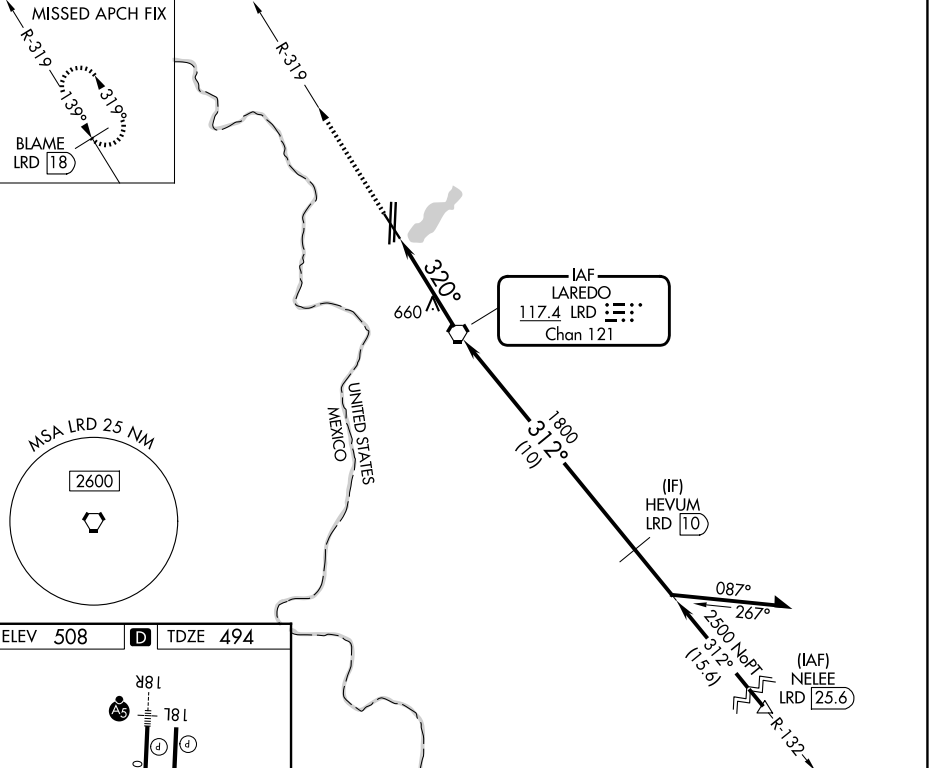
VOR or TACAN RWY 32

LAREDO INTL (L.R.D)

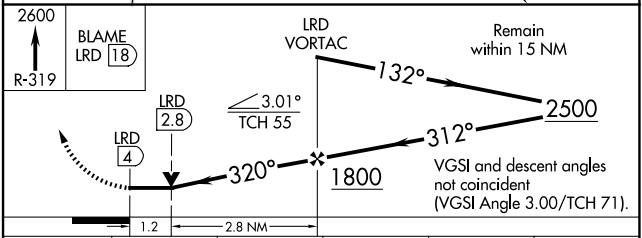
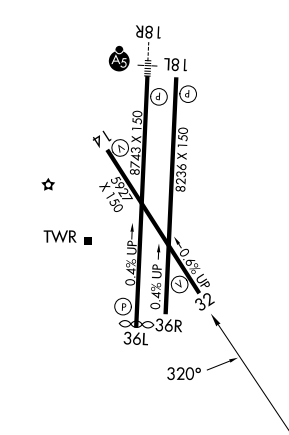
⚠ Circling NA west of Rwy 14 and 36L. Rwy 32 helicopter visibility reduction below ¼ SM NA. DME required.

MISSED APPROACH: Climb to 2600 on LRD VORTAC R-319 to BLAME/LRD 18 DME and hold.

ATIS 125.775	HOUSTON CENTER 127.8 307.2	LAREDO TOWER * 120.1 (CTAF) 0 257.9	GND CON 121.8	UNICOM 122.95
------------------------	--------------------------------------	--	-------------------------	-------------------------



ELEV 508	D	TDZE 494
----------	----------	----------



CATEGORY	A	B	C	D	E
S-32	920-1	426 (500-1)	920-1¼ 426 (500-1¼)		
CIRCLING	940-1 432 (500-1)	980-1 472 (500-1)	1100-1½ 592 (600-1½)	1200-2¼ 692 (700-2¼)	1200-2½ 692 (700-2½)

LAREDO, TEXAS
Amdt 11A 01MAR18

27°33'N-99°28'W

LAREDO INTL (L.R.D)

VOR or TACAN RWY 32

SC-3, 14 MAY 2026 to 11 JUN 2026

SC-3, 14 MAY 2026 to 11 JUN 2026