

# RNAV (GPS) RWY 20

LAS VEGAS MUNI (LVS)

|                        |                         |
|------------------------|-------------------------|
| APP CRS<br><b>202°</b> | Rwy Ldg<br><b>5006</b>  |
|                        | TDZE<br><b>6867</b>     |
|                        | Apt Elev<br><b>6877</b> |

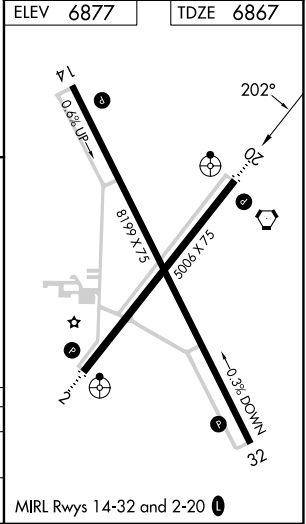
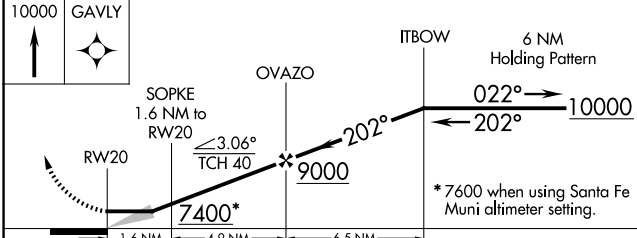
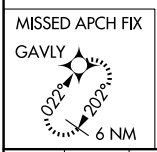
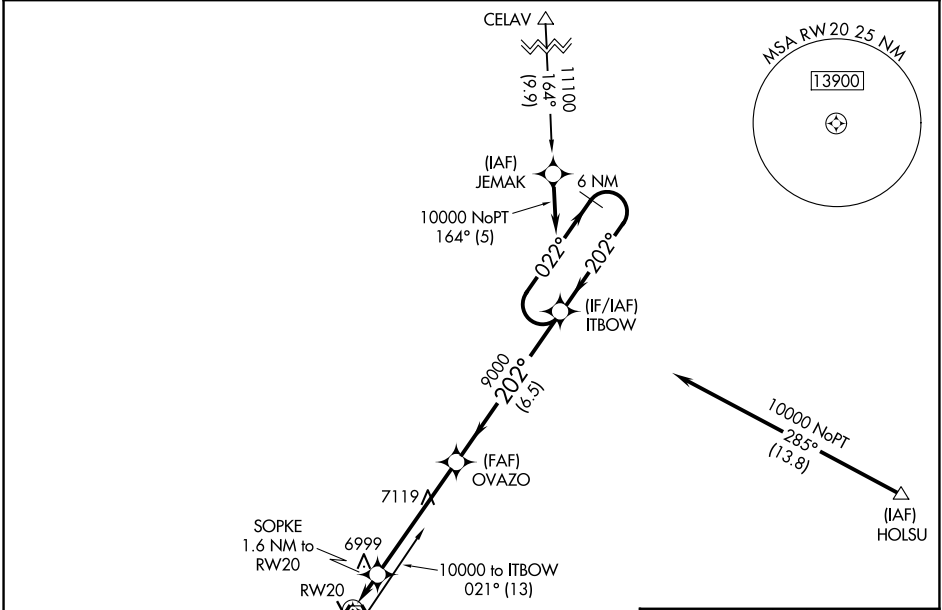
RNP APCH-GPS.

⚠ When local altimeter setting not received, use Santa Fe Rgnl altimeter setting and increase all MDAs 200 feet; increase LNAV Cat C visibility to 1½ SM and Circling Cat C visibility to 2¼ SM. Straight-in minimums NA when using Santa Fe Muni altimeter setting.

ODALS

MISSED APPROACH: Climb to 10000 direct GAVLY and hold.

|                        |   |                                 |
|------------------------|---|---------------------------------|
| ASOS<br><b>118.525</b> | ALBUQUERQUE CENTER<br><b>132.8 346.35</b> | UNICOM<br><b>122.8 (CTAF) 0</b> |
|------------------------|---|---------------------------------|



|          |                    |             |                      |    |
|----------|--------------------|-------------|----------------------|----|
| CATEGORY | A                  | B           | C                    | D  |
| LNAV MDA | 7260-¾ 393 (400-¾) |             |                      | NA |
| CIRCLING | 7420-1             | 543 (600-1) | 7420-1½ 543 (600-1½) | NA |

SW-1, 14 MAY 2026 to 11 JUN 2026

SW-1, 14 MAY 2026 to 11 JUN 2026