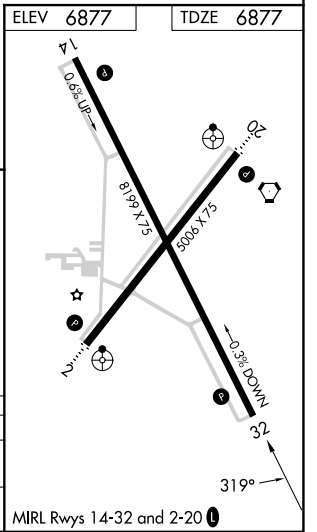
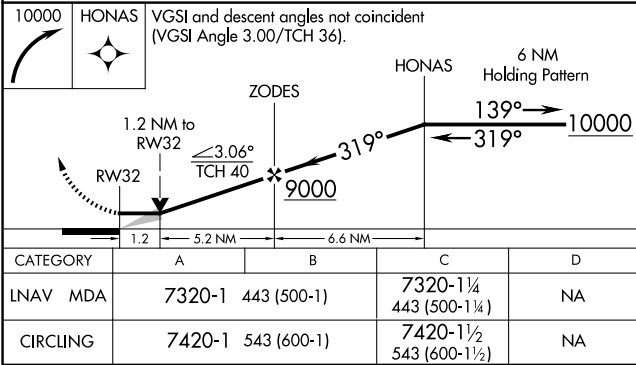
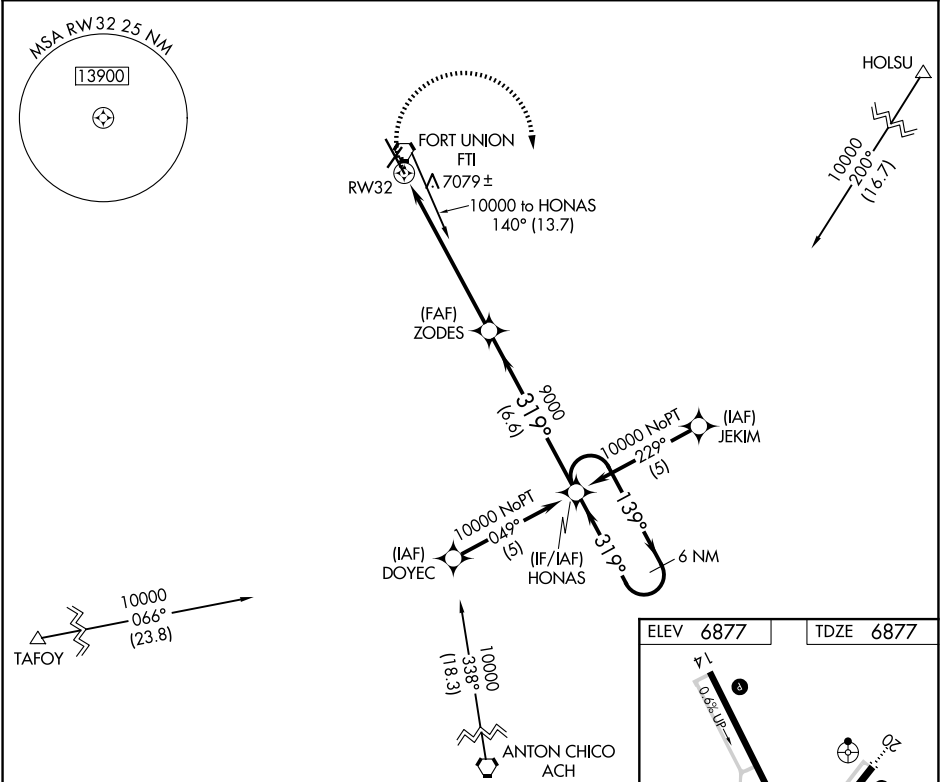


RNAV (GPS) RWY 32

LAS VEGAS MUNI (LVS)

| | | |
|------------------------|-----------------------------|---|
| APP CRS 319° | Rwy Ldg TDZE Apt Elev | 8199 6877 6877 |
|------------------------|-----------------------------|---|

| | | |
|--|---|--|
| RNP APCH-GPS. | | MISSED APPROACH: Climbing right turn to 10000 direct HONAS and hold. |
| <p>▼ When local altimeter not received, used Santa Fe Rgnl altimeter setting and increase all MDA 200 feet; increase LNAV Cat C visibility to 1 7/8 SM and Circling Cat C visibility to 2 1/4 SM. VDP NA when using Santa Fe Muni altimeter setting.</p> | | |
| ASOS 118.525 | ALBUQUERQUE CENTER 132.8 346.35 | UNICOM 122.8 (CTAF) |



SW-1, 14 MAY 2026 to 11 JUN 2026

SW-1, 14 MAY 2026 to 11 JUN 2026