

FORT SILL, OKLAHOMA

# RNAV (GPS) RWY 18

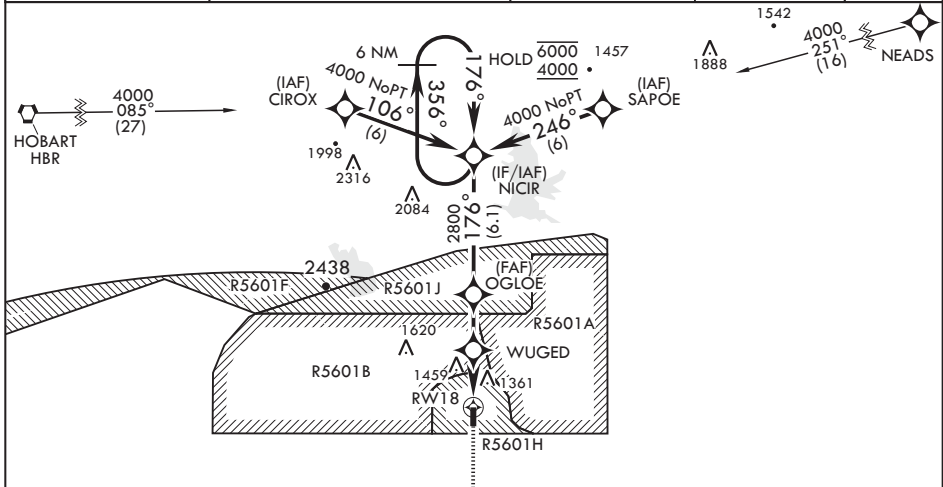
APCH CRS 176°	Rwy Idg TDZE Arpt Elev	5002 1188 1188
------------------	------------------------------	----------------------

-(USA)

HENRY POST AAF (KFSI)

RNP APCH	MISSED APPROACH: Climb to 3500 direct to FESAD and hold.
----------	--

ATIS 135.425 354.025	FORT SILL APP CON/DEP CON 120.55 322.4	CLNC DEL 121.7 279.575	CTAF 124.95 0*	ASR
-------------------------	---	---------------------------	-------------------	-----

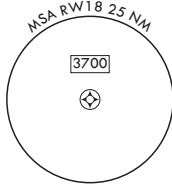
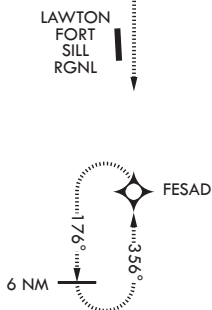


Procedure NA for arrivals at NEADS on V77 Northbound.

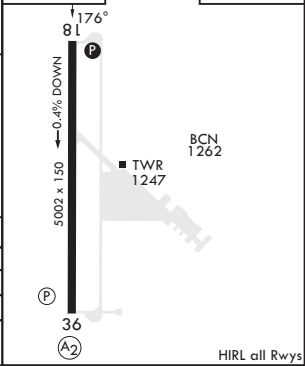
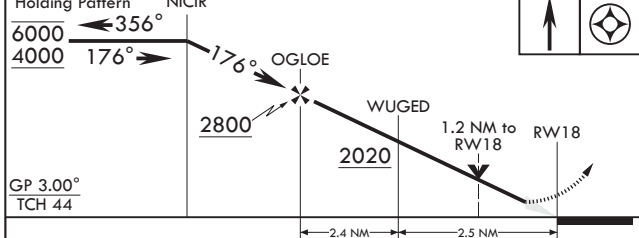
When local altimeter setting not received, use Lawton-Fort Sill RGNL altimeter setting.

For uncompensated Baro-VNAV systems, Procedure NA below -17°C or above 54°C.

Procedure NA for arrival on HBR VORTAC Airway Radials 354 CW 175.



6 NM Holding Pattern NICIR	3500 FESAD	ELEV 1188	TDZE 1188
----------------------------	------------	-----------	-----------



GP 3.00° TCH 44				
CATEGORY	A	B	C	D
LNAV/VNAV DA	1673-1 $\frac{3}{8}$		485	(500-1 $\frac{3}{8}$ )
LNAV MDA	1600-1	412 (500-1)	1600-1 $\frac{1}{8}$	412 (500-1 $\frac{1}{8}$ )
CIRCLING	1680-1 492 (500-1)	1760-1 572 (600-1)	1820-1 $\frac{1}{4}$ 632 (700-1 $\frac{1}{4}$ )	1920-2 $\frac{1}{4}$ 732 (800-2 $\frac{1}{4}$ )

FORT SILL, OKLAHOMA 34°39'N - 98°24'W HENRY POST AAF (KFSI)

Amdt 2 10AUG23

# RNAV (GPS) RWY 18

SC-1, 14 MAY 2026 to 11 JUN 2026

SC-1, 14 MAY 2026 to 11 JUN 2026

HIRL all Rwy's