

FORT SILL, OKLAHOMA

VOR RWY 18

VOR/DME LAW 116.85 Chan 115(Y)	APCH CRS 174°	Rwy ldg TDZE 1188 Arprt Elev 1188
--	-------------------------	---

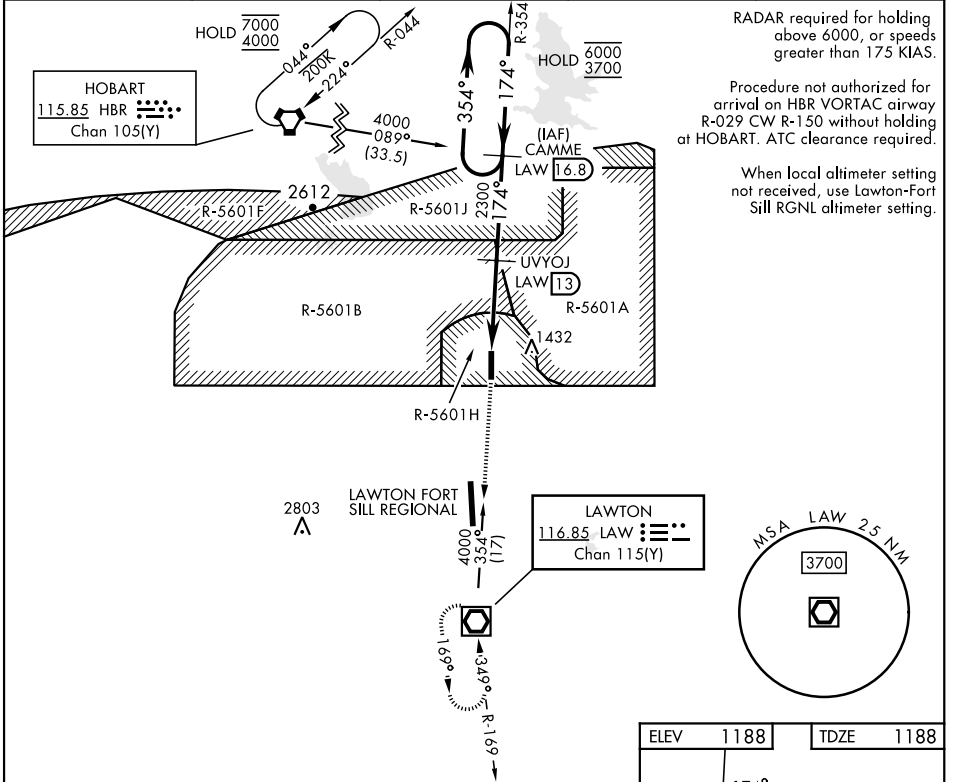
[USA]

HENRY POST AAF (KFSI)

DME required

MISSED APPROACH: Climb straight ahead to 3000 direct to LAW VOR/DME and hold.

ATIS 135.425 354.025	FORT SILL APP/DEP CON 120.55 322.4	CTAF 124.950	CLNC DEL 121.7 279.575	ASR
--------------------------------	--	------------------------	----------------------------------	-----



RADAR required for holding above 6000, or speeds greater than 175 KIAS.

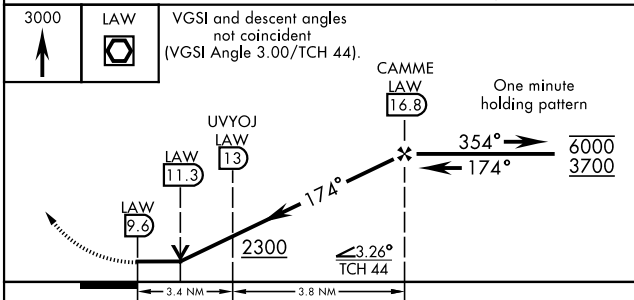
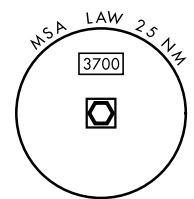
Procedure not authorized for arrival on HBR VORTAC airway R-029 CW R-150 without holding at HOBART. ATC clearance required.

When local altimeter setting not received, use Lawton-Fort Sill RGNL altimeter setting.

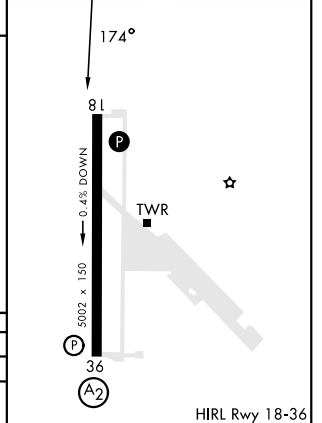
2803 Δ

LAWTON FORT SILL REGIONAL

LAWTON
116.85 LAW
Chan 115(Y)



ELEV	1188	TDZE	1188
------	------	------	------



CATEGORY	A	B	C	D
S-18	1760/55 572 (600-1)		1760-1 572 (600-1 1/2)	
C CIRCLING	1760-1 572 (600-1)		1820-1 632 (700-1 3/4)	1920-2 732 (800-2 1/4)

HIRL Rwy 18-36

FORT SILL, OKLAHOMA
Amdt 3 31OCT24

34° 39' N-98° 24' W

HENRY POST AAF (KFSI)

VOR RWY 18

SC-1, 14 MAY 2026 to 11 JUN 2026

SC-1, 14 MAY 2026 to 11 JUN 2026