

FORT SILL, OKLAHOMA

# VOR RWY 36

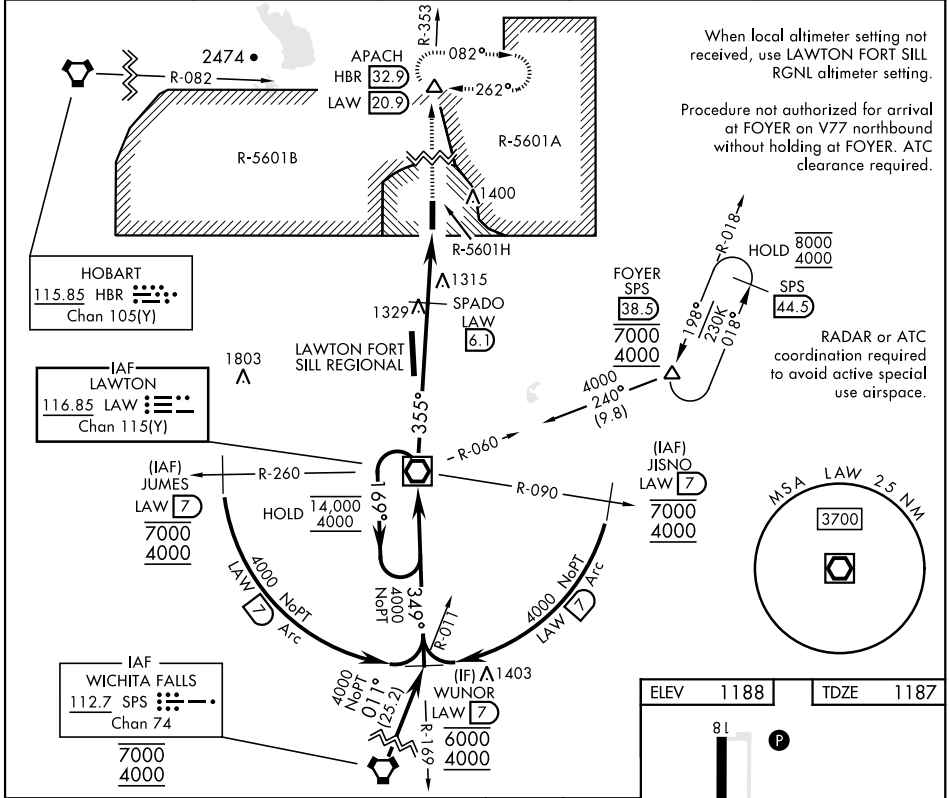
VOR/DME LAW <b>116.85</b> Chan <b>115(Y)</b>	APCH CRS <b>355°</b>	Rwy Idg TDZE <b>1187</b> Arprt Elev <b>1188</b>
--	-------------------------	---

[USA]

HENRY POST AAF (KFSI)

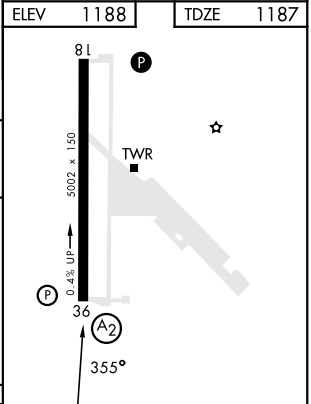
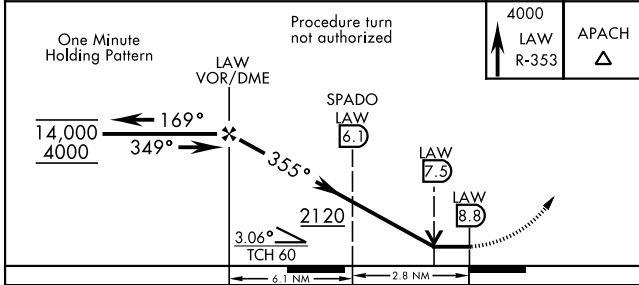
DME, RADAR required.	SALS <b>(A2)</b>	MISSED APPROACH: Climb to 4000 on LAW VOR/DME R-353 to APACH INT/LAW 20.9 DME and hold.
----------------------	---------------------	---

ATIS <b>135.425 354.025</b>	FORT SILL APP/DEP CON <b>120.55 322.4</b>	CTAF <b>124.950</b>	CLNC DEL <b>121.7 279.575</b>	ASR
--------------------------------	--	------------------------	----------------------------------	-----



SC-1, 14 MAY 2026 to 11 JUN 2026

SC-1, 14 MAY 2026 to 11 JUN 2026



CATEGORY	A	B	C	D
S-36*	1640/40	453 (500-¾)	1640/55	453 (500-1)
CIRCLING	1680-1	1760-1	1820-1 ¾	1920-2 ¼
	492 (500-1)	572 (600-1)	632 (700-1 ¾)	732 (800-2 ¼)

FAF to MAP 8.8 NM					
Knots	60	90	120	150	180
Min:Sec	8:48	5:52	4:24	3:31	2:56

FORT SILL, OKLAHOMA  
Amdt 16 31OCT24

34° 39' N-98° 24' W

HENRY POST AAF (KFSI)

# VOR RWY 36